

Recombinant Human LPCAT2 Protein, GST-tagged

Cat. No. LPCAT2-4722H Lot. No. (See product label)

SPECIFICATION

Product Overview	Human LPCAT2 full-length ORF (NP_060309.2, 1 a.a. - 544 a.a.) recombinant protein with GST-tag at N-terminal.
Species	Human
Source	Wheat Germ
Description	This gene encodes a member of the lysophospholipid acyltransferase family. The encoded enzyme may function in two ways: to catalyze the biosynthesis of platelet-activating factor (1-O-alkyl-2-acetyl-sn-glycero-3-phosphocholine) from 1-O-alkyl-sn-glycerol-3-phosphocholine, and to catalyze the synthesis of glycerophospholipid precursors from arachidonyl-CoA and lysophosphatidylcholine. The encoded protein may function in membrane biogenesis and production of platelet-activating factor in inflammatory cells. The enzyme may localize to the endoplasmic reticulum and the Golgi. [provided by RefSeq]
Molecular Mass	86.6 kDa
AA Sequence	MSRCAQAAEVAATVPGAGVGNVGLRPPMVPRQASFFPPPVPNPFVQQTQIGSARR VQIVLLGIILLPIRVLLVALILLLAWPFAAISTVCCPEKLTHPITGWRRKITQTALKFLGRA MFFSMGFIVAVKGGKIASPLEAPVFVAAPHSTFFDGIACVVAGLPSMVSRENNAQVPLI GRLLRAVQPVLVSRVDPDSRKNTINEIHKRTTSGGEWPQILVFPEGTCTNRSCLITFK PGAFIPGVPVQPVLLRYPNKLDTVTWTWQGYTFIQLCMLTFCQLFTKVEVEFMPVQV PNDEEKNDPVLVLFANKVRNLMAEALGIPVTDHTYEDCRLMISAGQLTLPMEAGLVEFT

 Tel: 1-631-559-9269 1-516-512-3133

 Email: info@creative-biomart.com  Fax: 1-631-938-8127

 45-1 Ramsey Road, Shirley, NY 11967, USA

KISRKLKLDWDGVRKHLDEYASIASSSKGGRIEIEFAKYLKLPVSDVLRQLFALFDR
 NHDGSIDFREYVIGLAVLCNPSNTEEIIQVAFKLFVDVDEGDYITEEEFSTILQASLGVP
 DLDVSGLFKEIAQGDSISYEEFKSFALKHPEYAKIFTTYLDLQTCHVFLPKVQTTPS
 TASNKVSPEKHEESTSDKKDD

Applications	Enzyme-linked Immunoabsorbent Assay Western Blot (Recombinant protein) Antibody Production Protein Array
Notes	Best use within three months from the date of receipt of this protein.
Storage	Store at -80 centigrade. Aliquot to avoid repeated freezing and thawing.
Storage Buffer	50 mM Tris-HCl, 10 mM reduced Glutathione, pH=8.0 in the elution buffer.

GENE INFORMATION

Gene Name	LPCAT2 lysophosphatidylcholine acyltransferase 2 [Homo sapiens]
Official Symbol	LPCAT2
Synonyms	LPCAT2; lysophosphatidylcholine acyltransferase 2; acyltransferase like 1 , AYTL1; FLJ20481; LPCAT-2; LPC acyltransferase 2; acyltransferase like 1; acyltransferase-like 1; lysoPC acyltransferase 2; lyso-PAF acetyltransferase; acetyl-CoA:lyso-PAF acetyltransferase; 1-acylglycerophosphocholine O-acyltransferase; 1-alkylglycerophosphocholine O-acetyltransferase; acyl-CoA:lysophosphatidylcholine acyltransferase 2; lyso-platelet-activating factor (PAF) acetyltransferase; acetyl-CoA:lyso-platelet-activating factor acetyltransferase; AYTL1; LysoPAFAT; DKFZp686H22112;

 Tel: 1-631-559-9269 1-516-512-3133

 Email: info@creative-biomart.com  Fax: 1-631-938-8127

 45-1 Ramsey Road, Shirley, NY 11967, USA

Gene ID 54947

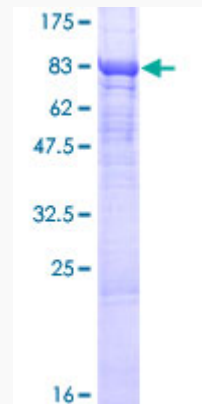
mRNA Refseq NM_017839

Protein Refseq NP_060309

MIM 612040

UniProt ID Q7L5N7

**Quality Control
Testing**



12.5% SDS-PAGE Stained with Coomassie Blue

 Tel: 1-631-559-9269 1-516-512-3133

 Email: info@creative-biomart.com  Fax: 1-631-938-8127

 45-1 Ramsey Road, Shirley, NY 11967, USA