

# Recombinant Human LPIN3 Protein, Myc/DDK-tagged, C13 and N15-labeled

Cat. No. LPIN3-447H Lot. No. (See product label)

## SPECIFICATION

### Product Overview

LPIN3 MS Standard C13 and N15-labeled recombinant protein (NP\_075047) with a C-terminal MYC/DDK tag, was expressed in HEK293 cells.

### Species

Human

### Source

HEK293

### Description

The protein encoded by this gene is a member of the lipin family of proteins, and all family members share strong homology in their C-terminal region. This protein is thought to form hetero-oligomers with other lipin family members, while one family member, lipin 1, can also form homo-oligomers. This protein contains conserved motifs for phosphatidate phosphatase 1 (PAP1) activity as well as a domain that interacts with a transcriptional co-activator. Lipin complexes act in the cytoplasm to catalyze the dephosphorylation of phosphatidic acid to produce diacylglycerol, which is the precursor of both triglycerides and phospholipids. Lipin complexes are also thought to regulate gene expression as transcriptional co-activators in the nucleus. Alternative splicing results in multiple transcript variants.

### Molecular Mass

93.4 kDa

### AA Sequence

MNYVGQLAETVFGTVKELYRGLNPATLSSGGIDVLVVKQVDGSFRCSPFHVRFKGLG  
VLR SREKVV DIELNGEPVDLHMKLGDSGEAFFVQELESDD EHVPPGLCTSPIPWGG  
LSGFPSDSLGTASEPEGLVMAGTASTGRRKR RRRRRKPKQKEDAVATDSSPEELE

 Tel: 1-631-559-9269 1-516-512-3133

 Email: [info@creative-biomart.com](mailto:info@creative-biomart.com)  Fax: 1-631-938-8127

 45-1 Ramsey Road, Shirley, NY 11967, USA

AGAESELSLPEKLRPEPPGVQLEEKSSLQPKDIYPYSDGEWPPQASLSAGELTSPK  
 SDSELEVRTPEPSPLRAESHMQWAWGRLPKVARAERPESVVLGRAGATSPPRG  
 GPSTPSTSVAGGVDPLGLPIQQTEAGADLQPDTEPTLVGPPLHTPETEESKTQSS  
 GDMGLPPASKSWSWATLEVPVPTGQPERVSRGKGSPKRSQHLGSPDIYLDLPSL  
 DSENAALYFPQSDSGLGARRWSEPSSQKSLRDPNPEHEPEPTLDTVDTIALSLCGG  
 LADSRDISLEKFNQHSVSYQDLTKNPGLLDDPNLVVKINGKHYNWAVAAPMILSLQA  
 FQKNLPKSTMDKLEREKMPRKGGRRWFSWRRRDFLAEERSAQKEKTAAKEQQGE  
 KTEVLSSDDAPDSPVILEIPSLPPSTPPSTPTYKSLRLSSDQIRRLNLQEGANDVV  
 FSVTTQYQGTCRCKATIYLWKWDDKVVISDIDGTITKSDALGHILPQLGKDWITHQGIT  
 SLYHKIQLNGYKFLYCSARAIGMADLTGKYLQWVSEGGCSLPGPILLSPSSLFSALH  
 REVIEKKPEVFKVACLSDIQQLFLPHGQPFYAAFNGRPNDFAYRQVGLPESRIFTV  
 NPRGELIQELIKNHKSTYERLGEVVLLFPPVARGPSTDLANPEYSNFCYWREPLPA  
 VDLDLDRTRTRPLEQKLISEEDLAANDILDYKDDDDKV

**Purity** > 80% as determined by SDS-PAGE and Coomassie blue staining

**Stability** Stable for 3 months from receipt of products under proper storage and handling conditions.

**Storage** Store at -80 centigrade. Avoid repeated freeze-thaw cycles.

**Concentration** 50 µg/mL as determined by BCA

**Storage Buffer** 100 mM glycine, 25 mM Tris-HCl, pH 7.3.

## GENE INFORMATION

**Gene Name** LPIN3 lipin 3 [ Homo sapiens (human) ]

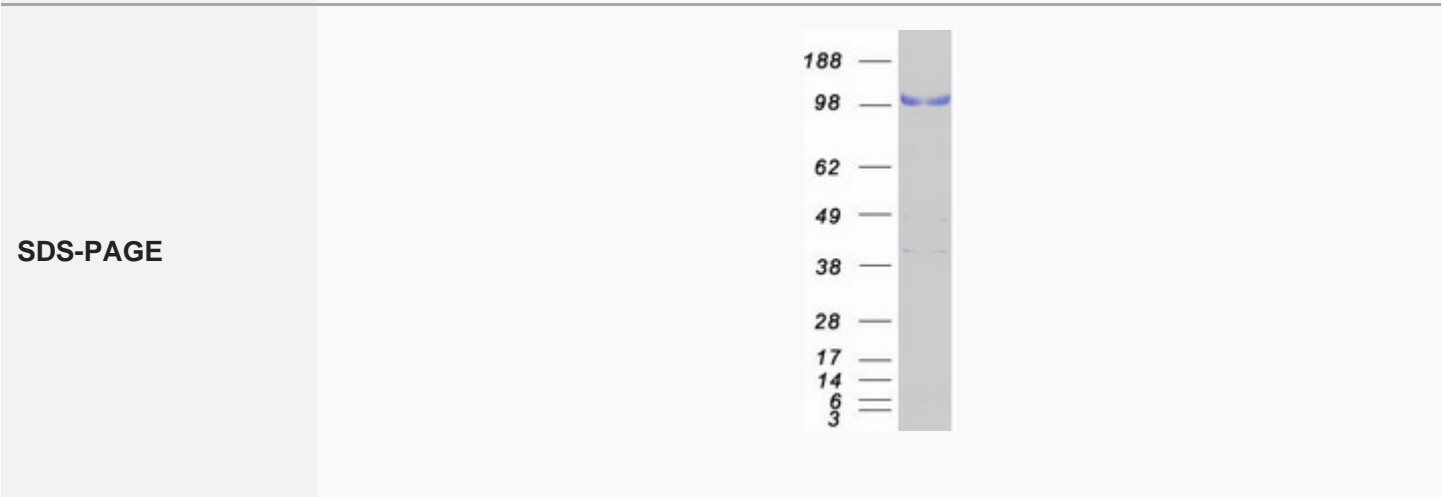
**Official Symbol** LPIN3

 Tel: 1-631-559-9269 1-516-512-3133

 Email: [info@creative-biomart.com](mailto:info@creative-biomart.com)  Fax: 1-631-938-8127

 45-1 Ramsey Road, Shirley, NY 11967, USA

<b>Synonyms</b>	LPIN3; lipin 3; lipin 3 like, LIPN3L; phosphatidate phosphatase LPIN3; SMP2; lipin-3; LIPN3L; dJ450M14.2; dJ450M14.3; dJ620E11.2
<b>Gene ID</b>	64900
<b>mRNA Refseq</b>	NM_022896
<b>Protein Refseq</b>	NP_075047
<b>MIM</b>	605520
<b>UniProt ID</b>	Q9BQK8



Tel: 1-631-559-9269 1-516-512-3133

Email: [info@creative-biomart.com](mailto:info@creative-biomart.com) Fax: 1-631-938-8127

45-1 Ramsey Road, Shirley, NY 11967, USA