

# Recombinant Human LPL Protein, Myc/DDK-tagged, C13 and N15-labeled

Cat. No. LPL-5717H Lot. No. (See product label)

## SPECIFICATION

|                         |   |
|-------------------------|---|
| <b>Product Overview</b> | LPL MS Standard C13 and N15-labeled recombinant protein (NP_000228) with a C-terminal MYC/DDK tag, was expressed in HEK293 cells.   |
| <b>Species</b>          | Human   |
| <b>Source</b>           | HEK293  |
| <b>Description</b>      | LPL encodes lipoprotein lipase, which is expressed in heart, muscle, and adipose tissue. LPL functions as a homodimer, and has the dual functions of triglyceride hydrolase and ligand/bridging factor for receptor-mediated lipoprotein uptake. Severe mutations that cause LPL deficiency result in type I hyperlipoproteinemia, while less extreme mutations in LPL are linked to many disorders of lipoprotein metabolism.  |
| <b>Molecular Mass</b>   | 53.2 kDa  |
| <b>AA Sequence</b>      | MESKALLVLTAVWLQSLTASRGGVAAADQRRDFIDIESKFALRTPEDTAEDTCHLIP<br>GVAESVATCHFNHSSKTFMVIHGWTVTGMYESWVPKLVAALYKREPDSNVIVVDWL<br>SRAQEHYPVSAGYTKLVGQDVARFINWMEEEFNYP LDNVHLLGYS LGAHAAGIAGS<br>LTNKKVNRITGLDPAGPNFEYAEAPSRLSPDDADFVDLHTFTRGSPGRSIGIQKPV<br>GHVDIYPNGGTFQPGCNIGEAIRVIAERGLGDVDQLVKCSHERSIHLFIDSLLEENP<br>SKAYRCSSKEAFEKGLCLSCRKNRCNNLGYEINKVRAKRSSKMYLKTRSQMPYKVF<br>HYQVKIHFSGTESEHTNQAFEISLYGTVAESENIPFTLPEVSTNKTY SFLIYTEVDIGE<br>LLMLKWKSDSYFSWSDWWSSPGFAIQKIRVKAGETQKKVIFCSREKVSHLQK GK |

Tel: 1-631-559-9269 1-516-512-3133

Email: [info@creative-biomart.com](mailto:info@creative-biomart.com) Fax: 1-631-938-8127

45-1 Ramsey Road, Shirley, NY 11967, USA

APAVFVKCHDKSLNKKSGTRTRPLEQKLISEEDLAANDILDYKDDDDKV

**Purity** > 80% as determined by SDS-PAGE and Coomassie blue staining

**Stability** Stable for 3 months from receipt of products under proper storage and handling conditions.

**Storage** Store at -80 centigrade. Avoid repeated freeze-thaw cycles.

**Concentration** 50 µg/mL as determined by BCA

**Storage Buffer** 100 mM glycine, 25 mM Tris-HCl, pH 7.3.

## GENE INFORMATION

**Gene Name** [LPL lipoprotein lipase \[ Homo sapiens \(human\) \]](#)

**Official Symbol** [LPL](#)

**Synonyms** LPL; lipoprotein lipase; LIPD; HDLCQ11; lipoprotein lipase; phospholipase A1; EC 3.1.1.32; EC 3.1.1.34

**Gene ID** [4023](#)

**mRNA Refseq** [NM\\_000237](#)

**Protein Refseq** [NP\\_000228](#)

**MIM** [609708](#)

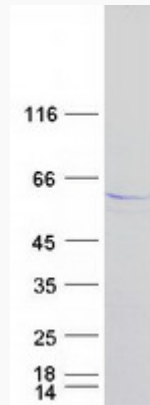
**UniProt ID** [P06858](#)

 Tel: 1-631-559-9269 1-516-512-3133

 Email: [info@creative-biomart.com](mailto:info@creative-biomart.com)  Fax: 1-631-938-8127

 45-1 Ramsey Road, Shirley, NY 11967, USA

**SDS-PAGE**



 Tel: 1-631-559-9269 1-516-512-3133

 Email: [info@creative-biomart.com](mailto:info@creative-biomart.com)  Fax: 1-631-938-8127

 45-1 Ramsey Road, Shirley, NY 11967, USA