

Recombinant Human LPXN protein, His & T7-tagged

Cat. No. LPXN-1663H **Lot. No.** (See product label)

SPECIFICATION

Product Overview	Recombinant Human LPXN aa. (Met1~Gln205 (Accession # O60711)) fused with N-terminal His & T7 tag was produced in E. coli cells.
Species	Human
Source	E.coli
ProteinLength	Met1~Gln205
Description	The product encoded by this gene is preferentially expressed in hematopoietic cells and belongs to the paxillin protein family. Similar to other members of this focal-adhesion-associated adaptor-protein family, it has four leucine-rich LD-motifs in the N-terminus and four LIM domains in the C-terminus. It may function in cell type-specific signaling by associating with PYK2, a member of focal adhesion kinase family. As a substrate for a tyrosine kinase in lymphoid cells, this protein may also function in, and be regulated by, tyrosine kinase activity. Alternative splicing results in multiple transcript variants encoding distinct isoforms.
Form	Freeze-dried powder
Molecular Mass	33kDa as determined by SDS-PAGE reducing conditions.
Endotoxin	<1.0EU per 1ug (determined by the LAL method)
Purity	>90%

 Tel: 1-631-559-9269 1-516-512-3133

 Email: info@creative-biomart.com  Fax: 1-631-938-8127

 45-1 Ramsey Road, Shirley, NY 11967, USA

Applications	SDS-PAGE; WB; ELISA; IP.
Stability	The thermal stability is described by the loss rate. The loss rate was determined by accelerated thermal degradation test, that is, incubate the protein at 37°C for 48h, and no obvious degradation and precipitation were observed. The loss rate is less than 5% within the expiration date under appropriate storage condition.
Storage	Avoid repeated freeze/thaw cycles. Store at 2-8°C for one month. Aliquot and store at -80°C for 12 months.
Storage buffer	Supplied as lyophilized form in 20mM Tris, 150mM NaCl, pH8.0, containing 1mM EDTA, 1mM DTT, 0.01% sarcosyl, 5% trehalose, and preservative.
Reconstitution	Reconstitute in sterile ddH ₂ O.
Isoelectric Point	4.8
GENE INFORMATION	
Gene Name	LPXN leupaxin [Homo sapiens (human)]
Official Symbol	LPXN
Synonyms	LPXN; leupaxin; LDPL
Gene ID	9404
mRNA Refseq	NM_001143995.2
Protein Refseq	NP_001137467.1

 Tel: 1-631-559-9269 1-516-512-3133

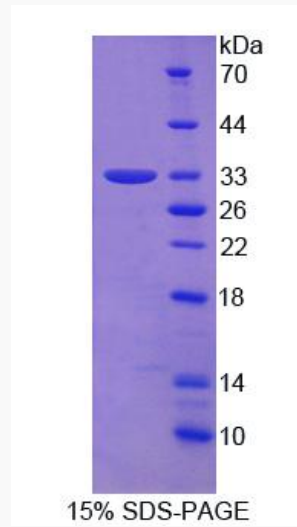
 Email: info@creative-biomart.com  Fax: 1-631-938-8127

 45-1 Ramsey Road, Shirley, NY 11967, USA

UniProt ID

O60711

SDS-PAGE



 Tel: 1-631-559-9269 1-516-512-3133

 Email: info@creative-biomart.com  Fax: 1-631-938-8127

 45-1 Ramsey Road, Shirley, NY 11967, USA