

Recombinant Human LRCH3 Protein, GST-tagged

Cat. No. LRCH3-4708H Lot. No. (See product label)

SPECIFICATION

Product Overview Human LRCH3 full-length ORF (NP_116162.1, 1 a.a. - 712 a.a.) recombinant protein with GST-tag at N-terminal.

Species Human

Source Wheat Germ

Description LRCH3 (Leucine Rich Repeats And Calponin Homology Domain Containing 3) is a Protein Coding gene. An important paralog of this gene is LRCH1.

Molecular Mass 105.2 kDa

AA Sequence

MAAAGLVAVAAAAEYSGTVASGGNLPGVHCGPSSGAGPGFGPGSWSRSLDRALE
 EAAVTGVLSLSGRKLREFPRGAANHDLTDTTRADLSRNRLSEIPIEACHFVSLENLNL
 YQNCIRYIPEAILNLQALTFLNISRNLSTLPVHLCNLPLKVLIASNNKLVSLPEEIGHLR
 HLMELDVSCNEIQTIPSQIGNLEALRDLNVRRNHLVHLPEELAEPLIRLDFSCNKITTI
 PVCYRNLRLHLQTITLDNNPLQSPPAQICIKGKVHIFKYLNIQACKIAPDLDPDYDRRPLG
 FGSCHEELYSSRPYGALDSGFNSVDSGDKRWSGNEPTDEFSDLPLRVAEITKEQRL
 RRESQYQENRGLVVTNGGVEHDLQIDYIDSCTAEAAAAEVRQPKGPDPSLSSQ
 FMAYIEQRRI SHEGSPVKPVAIREFQKTEDMRRYLHQNRVPAEPSSLLSLSASHNQL
 SHTDLELHQRREQLVERTRREAQLAALQYEEEKIRTKQIQRDAVLDFVKQKASQSPQ
 KQHPLLDGVDGECPPSRRSQHTDDSA LCSLSGLNQVGCAATLPHSSAFTPLKSD
 DRPNALLSSPATETVHHSPAYSFPAAIQRNQRPQPESFLFRAGVRAETNKGHASPL
 PPSAAPTDDSTDSITGQNSRQREEELELIDQLRKHIEYRLKVS LPCDLGAALTDGVVL

 Tel: 1-631-559-9269 1-516-512-3133

 Email: info@creative-biomart.com  Fax: 1-631-938-8127

 45-1 Ramsey Road, Shirley, NY 11967, USA

CHLANHVRPRSVPSIHVPSPAVVS

Applications

Enzyme-linked Immunoabsorbent Assay
 Western Blot (Recombinant protein)
 Antibody Production
 Protein Array

Notes

Best use within three months from the date of receipt of this protein.

Storage

Store at -80 centigrade. Aliquot to avoid repeated freezing and thawing.

Storage Buffer

50 mM Tris-HCl, 10 mM reduced Glutathione, pH=8.0 in the elution buffer.

GENE INFORMATION

Gene Name

LRCH3 leucine-rich repeats and calponin homology (CH) domain containing 3 [Homo sapiens]

Official Symbol

LRCH3

Synonyms

LRCH3; leucine-rich repeats and calponin homology (CH) domain containing 3; leucine-rich repeat and calponin homology domain-containing protein 3; MGC4126; FLJ20994; FLJ43245; FLJ44976;

Gene ID

84859

mRNA Refseq

NM_032773

Protein Refseq

NP_116162

UniProt ID

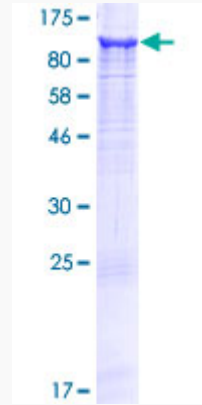
Q96I18

 Tel: 1-631-559-9269 1-516-512-3133

 Email: info@creative-biomart.com  Fax: 1-631-938-8127

 45-1 Ramsey Road, Shirley, NY 11967, USA

**Quality Control
Testing**



12.5% SDS-PAGE Stained with Coomassie Blue

 Tel: 1-631-559-9269 1-516-512-3133

 Email: info@creative-biomart.com  Fax: 1-631-938-8127

 45-1 Ramsey Road, Shirley, NY 11967, USA