

Recombinant Human LRFN1 Protein, GST-tagged

Cat. No. LRFN1-4705H Lot. No. (See product label)

SPECIFICATION

Product Overview	Human LRFN1 full-length ORF (XP_290842.2, 1 a.a. - 771 a.a.) recombinant protein with GST-tag at N-terminal.
Species	Human
Source	Wheat Germ
Description	LRFN1 (Leucine Rich Repeat And Fibronectin Type III Domain Containing 1) is a Protein Coding gene. Among its related pathways are Protein-protein interactions at synapses and SALM protein interactions at the synapses. An important paralog of this gene is LRFN2.
Molecular Mass	108.7 kDa
AA Sequence	<pre> MAPGPFSSALLSPPPAALPFLLLWAGASRGQPCPGRCICQNVAPTLTMLCAKTGLL FVPPAIDRRVVELRLTDNFIAAVRRRDFANMTSLVHLTLSRNTIGQVAAGAFADLRAL RALHLDSNRLAEVRGDQLRGLGNLRHLILGNNQIRRVESAADFALSTVEDLDLSYN NLEALPWEAVGQMVNLNTLTDHNLIDHIAEGTFVQLHKLVRDMTSNRLHKLPPDG LFLRSQGTGPKPPTPLTVSFGGNPLHCNCELLWLRRLTREDDLETCAPEHLTDRYF WSIPEEEFLCEPPLITRQAGGRALVVEGQAVSLRCRAVGDPEPVVHWVAPDGRLLG NSSRTRVRGDGTLDVTTITLRDSGTFTCIASNAAGEATAPVEVCVPLPLMAPPPAA PPPLTEPGSSDIATPGRPGANDSAAERRLVAAELTSNSVLIRWPAQRVPVGIRMYQV QYNSSVDDSLVYRMIPSTSQTFLVNDLAAGRAYDLCVLAVYDDGATALPATRVVGC VQFTTAGDPAPCRPLRAHFLGGTMIIAIGGVIVASVLVFIPLLIRYKQVYGDGDSRRVK </pre>

 Tel: 1-631-559-9269 1-516-512-3133

 Email: info@creative-biomart.com  Fax: 1-631-938-8127

 45-1 Ramsey Road, Shirley, NY 11967, USA

GSRSLPRVSHVCSQTNGAGTGAAQAPALPAQDHYEALREVESQAAPAVAVEAKAM
 EAETASAEPEVVLGRSLGGSATSLCLLPSEETSGEESRAAVGPRRSRSGALEPPTS
 APPTLALVPGGAAARPRPQQRYSDGDYDALFQSHSYPRRARRTKRHRSTPHLDG
 AGGGAAGEDGDLGLGSARACLAFTSTEWMLSTV

Applications	Enzyme-linked Immunoabsorbent Assay Western Blot (Recombinant protein) Antibody Production Protein Array
Notes	Best use within three months from the date of receipt of this protein.
Storage	Store at -80 centigrade. Aliquot to avoid repeated freezing and thawing.
Storage Buffer	50 mM Tris-HCl, 10 mM reduced Glutathione, pH=8.0 in the elution buffer.

GENE INFORMATION

Gene Name	LRFN1 leucine rich repeat and fibronectin type III domain containing 1 [Homo sapiens]
Official Symbol	LRFN1
Synonyms	LRFN1; leucine rich repeat and fibronectin type III domain containing 1; leucine-rich repeat and fibronectin type III domain-containing protein 1; KIAA1484; SALM2; synaptic adhesion-like molecule 2;
Gene ID	57622
mRNA Refseq	NM_020862

 Tel: 1-631-559-9269 1-516-512-3133

 Email: info@creative-biomart.com  Fax: 1-631-938-8127

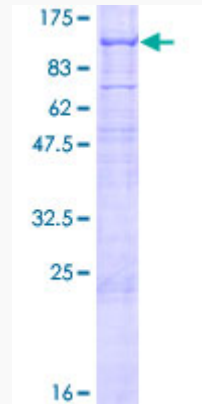
 45-1 Ramsey Road, Shirley, NY 11967, USA

Protein Refseq NP_065913

MIM 612807

UniProt ID Q9P244

**Quality Control
Testing**



12.5% SDS-PAGE Stained with Coomassie Blue

 Tel: 1-631-559-9269 1-516-512-3133

 Email: info@creative-biomart.com  Fax: 1-631-938-8127

 45-1 Ramsey Road, Shirley, NY 11967, USA