

Recombinant Human LRG1 Protein, Myc/DDK-tagged, C13 and N15-labeled

Cat. No. LRG1-3618H **Lot. No.** (See product label)

SPECIFICATION

Product Overview	LRG1 MS Standard C13 and N15-labeled recombinant protein (NP_443204) with a C-terminal MYC/DDK tag, was expressed in HEK293 cells.
Species	Human
Source	HEK293
ProteinLength	1-347 aa
Description	The leucine-rich repeat (LRR) family of proteins, including LRG1, have been shown to be involved in protein-protein interaction, signal transduction, and cell adhesion and development. LRG1 is expressed during granulocyte differentiation.
Molecular Mass	38.2 kDa
AA Sequence	MSSWSRQRPKSPGGIQPHVSRITFLLLLLLAASAWGVTLSPKDCQVFRSDHGSSISC QPPAEIPGYLPADTVHLAVEFFNLTHLPANLLQGASKLQELHLSSNGLESLSPEFLRP VPQLRVLDLTRNALTGLPSGLFQASATLDTLVLKENQLEVLVSWLHGLKALGHLDL SGNRLRKLPPGLLANFTLLRTLDTLGENQLETLPDLLRGPLQLERLHLEGKQLQVLG KDLLLPQPDRLRYLFLNGNKLARVAAGAFQGLRQLDMLDLSNNSLASVPEGLWASLG QPNWDMRDGFDISGNPWICDQNLSDLYRWLQAQKDKMFSQNDTRCAGPEAVKGG TLLAVAKSQTRTRPLEQKLISEEDLAANDILDYKDDDDKV
Purity	> 80% as determined by SDS-PAGE and Coomassie blue staining

 Tel: 1-631-559-9269 1-516-512-3133

 Email: info@creative-biomart.com  Fax: 1-631-938-8127

 45-1 Ramsey Road, Shirley, NY 11967, USA

Stability	Stable for 3 months from receipt of products under proper storage and handling conditions.
Storage	Store at -80 centigrade. Avoid repeated freeze-thaw cycles.
Concentration	50 µg/mL as determined by BCA
Storage Buffer	100 mM glycine, 25 mM Tris-HCl, pH 7.3.

GENE INFORMATION

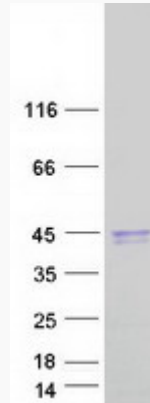
Gene Name	LRG1 leucine-rich alpha-2-glycoprotein 1 [Homo sapiens (human)]
Official Symbol	LRG1
Synonyms	LRG1; leucine-rich alpha-2-glycoprotein 1; leucine-rich alpha-2-glycoprotein; leucine rich alpha 2 glycoprotein; LRG; 1300008B03Rik; 2310031E04Rik; HMFT1766; FLJ45787;
Gene ID	116844
mRNA Refseq	NM_052972
Protein Refseq	NP_443204
MIM	611289
UniProt ID	P02750

 Tel: 1-631-559-9269 1-516-512-3133

 Email: info@creative-biomart.com  Fax: 1-631-938-8127

 45-1 Ramsey Road, Shirley, NY 11967, USA

SDS-PAGE



 Tel: 1-631-559-9269 1-516-512-3133

 Email: info@creative-biomart.com  Fax: 1-631-938-8127

 45-1 Ramsey Road, Shirley, NY 11967, USA