

Recombinant Human LRG1 Protein (Thr37-Leu340), N-His tagged

Cat. No. LRG1-4001H Lot. No. (See product label)

SPECIFICATION

Product Overview	Recombinant human LRG1 (Thr37-Leu340) fused with the N-His tag was expressed in E. coli.
Species	Human
Source	E.coli
ProteinLength	Thr37-Leu340
Form	Lyophilized powder/frozen liquid
Molecular Mass	35.86 kDa
Purity	>90% as determined by SDS-PAGE.
Notes	For research use only.
Storage	Use a manual defrost freezer and avoid repeated freeze thaw cycles. Store at 2 to 8 centigrade for one week. Store at -20 to -80 centigrade for twelve months from the date of receipt.
Storage Buffer	0.01M PBS, pH 7.4, 0.02% NLS
Reconstitution	Reconstitute in sterile water for a stock solution.

 Tel: 1-631-559-9269 1-516-512-3133

 Email: info@creative-biomart.com  Fax: 1-631-938-8127

 45-1 Ramsey Road, Shirley, NY 11967, USA

Shipping

They are shipped out with dry ice/blue ice unless customers require otherwise.

GENE INFORMATION
Gene Name

LRG1 leucine-rich alpha-2-glycoprotein 1 [Homo sapiens (human)]

Official Symbol

LRG1

Synonyms

LRG1; leucine-rich alpha-2-glycoprotein 1; leucine-rich alpha-2-glycoprotein; leucine rich alpha 2 glycoprotein; LRG; 1300008B03Rik; 2310031E04Rik; HMFT1766; FLJ45787;

Gene ID

116844

mRNA Refseq

NM_052972

Protein Refseq

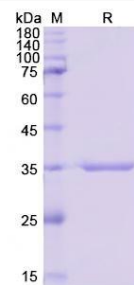
NP_443204

MIM

611289

UniProt ID

P02750

SDS-PAGE


Tel: 1-631-559-9269 1-516-512-3133

Email: info@creative-biomart.com Fax: 1-631-938-8127

45-1 Ramsey Road, Shirley, NY 11967, USA