

Recombinant Human LRG1 Protein, GST-tagged

Cat. No. LRG1-4704H **Lot. No.** (See product label)

SPECIFICATION

| | |
|-------------------------|-------------------------------------------------------------------------------------------------------------------------------------------------------------------------------------------------------------------------------------------------------------------------------------------------------------------------------------------------------------------------------------------------------------------------------------|
| Product Overview | Human LRG1 full-length ORF (AAH34389, 37 a.a. - 347 a.a.) recombinant protein with GST-tag at N-terminal. |
| Species | Human |
| Source | Wheat Germ |
| Description | The leucine-rich repeat (LRR) family of proteins, including LRG1, have been shown to be involved in protein-protein interaction, signal transduction, and cell adhesion and development. LRG1 is expressed during granulocyte differentiation (ODonnell et al., 2002 [PubMed 12223515]).[supplied by OMIM |
| Molecular Mass | 59.95 kDa |
| AA Sequence | <p> TLSPKDCQVFRPDHGSSISCQPPAEIPGYLPADTVHLAVEFFNLTHLPANLLQGASKL QELHLSSNGLESLSPEFLRPVQQRVLDLTRNALTGLPSGLFQASATLDTLVLKENQL EVLEVSWLHGLKALGHLDLSGNRLRKLPPGLLANFTLLRTLDTLGENQLETLPDILLR GPLQLERLHLEGNKLQVLGKDLLLPQPDRLRYLFLNGNKLARVAAGAFQGLRQLDML DLSNNSLASVPEGLWASLGQPNWDMRDGFDISGNPWICDQNLSDLYRWLQAQRD KMFSQNDTRCAGPEAVKGGQTLAVAKSQ </p> |
| Applications | Enzyme-linked Immunoabsorbent Assay Western Blot (Recombinant protein) Antibody Production Protein Array |

 Tel: 1-631-559-9269 1-516-512-3133

 Email: info@creative-biomart.com  Fax: 1-631-938-8127

 45-1 Ramsey Road, Shirley, NY 11967, USA

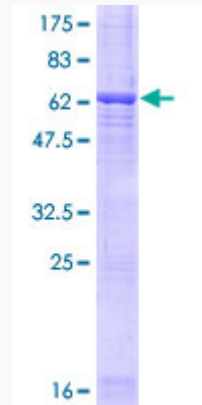
| | |
|-------------------------|-------------------------------------------------------------------------------------------------------------------------------------------------------------------------|
| Notes | Best use within three months from the date of receipt of this protein. |
| Storage | Store at -80 centigrade. Aliquot to avoid repeated freezing and thawing. |
| Storage Buffer | 50 mM Tris-HCl, 10 mM reduced Glutathione, pH=8.0 in the elution buffer. |
| GENE INFORMATION | |
| Gene Name | LRG1 leucine-rich alpha-2-glycoprotein 1 [Homo sapiens] |
| Official Symbol | LRG1 |
| Synonyms | LRG1; leucine-rich alpha-2-glycoprotein 1; leucine-rich alpha-2-glycoprotein; leucine rich alpha 2 glycoprotein; LRG; 1300008B03Rik; 2310031E04Rik; HMFT1766; FLJ45787; |
| Gene ID | 116844 |
| mRNA Refseq | NM_052972 |
| Protein Refseq | NP_443204 |
| MIM | 611289 |
| UniProt ID | P02750 |

 Tel: 1-631-559-9269 1-516-512-3133

 Email: info@creative-biomart.com  Fax: 1-631-938-8127

 45-1 Ramsey Road, Shirley, NY 11967, USA

**Quality Control
Testing**



12.5% SDS-PAGE Stained with Coomassie Blue

 Tel: 1-631-559-9269 1-516-512-3133

 Email: info@creative-biomart.com  Fax: 1-631-938-8127

 45-1 Ramsey Road, Shirley, NY 11967, USA