

Recombinant Human LRGUK Protein, GST-tagged

Cat. No. LRGUK-4308H Lot. No. (See product label)

SPECIFICATION

Product Overview	Human FLJ32786 partial ORF (NP_653249, 721 a.a. - 825 a.a.) recombinant protein with GST-tag at N-terminal.
Species	Human
Source	Wheat Germ
Description	LRGUK (Leucine Rich Repeats And Guanylate Kinase Domain Containing) is a Protein Coding gene. GO annotations related to this gene include kinase activity. An important paralog of this gene is LRRC23.
Molecular Mass	37.29 kDa
AA Sequence	YFKPPFGPYPEKSGKDSLVSMLKCSLFRFCPWSKELPFQPPEGSISSHLGSGASDSE TEETRKALPIQSFSHEKESHQHRQHSVPVISRPGSNVKPTLPPPIQGRR
Applications	Enzyme-linked Immunoabsorbent Assay Western Blot (Recombinant protein) Antibody Production Protein Array
Notes	Best use within three months from the date of receipt of this protein.
Storage	Store at -80 centigrade. Aliquot to avoid repeated freezing and thawing.

 Tel: 1-631-559-9269 1-516-512-3133

 Email: info@creative-biomart.com  Fax: 1-631-938-8127

 45-1 Ramsey Road, Shirley, NY 11967, USA

Storage Buffer 50 mM Tris-HCl, 10 mM reduced Glutathione, pH=8.0 in the elution buffer.

GENE INFORMATION

Gene Name LRGUK leucine-rich repeats and guanylate kinase domain containing [Homo sapiens]

Official Symbol LRGUK

Synonyms LRGUK; leucine-rich repeats and guanylate kinase domain containing; leucine-rich repeat and guanylate kinase domain-containing protein; FLJ32786;

Gene ID 136332

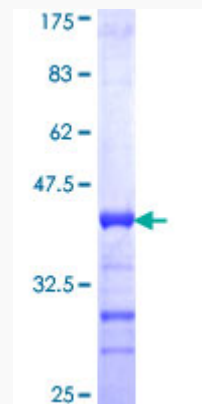
mRNA Refseq NM_144648

Protein Refseq NP_653249

MIM 616478

UniProt ID Q96M69

Quality Control Testing



 Tel: 1-631-559-9269 1-516-512-3133

 Email: info@creative-biomart.com  Fax: 1-631-938-8127

 45-1 Ramsey Road, Shirley, NY 11967, USA



12.5% SDS-PAGE Stained with Coomassie Blue.

 Tel: 1-631-559-9269 1-516-512-3133

 Email: info@creative-biomart.com  Fax: 1-631-938-8127

 45-1 Ramsey Road, Shirley, NY 11967, USA