

Recombinant Human LRIG1 protein, His & T7-tagged

Cat. No. LRIG1-1878H **Lot. No.** (See product label)

SPECIFICATION

Product Overview	Recombinant Human LRIG1 aa. (His739~Leu995 (Accession # Q96JA1)) fused with N-terminal His & T7 tag was produced in E. coli cells.
Species	Human
Source	E.coli
ProteinLength	His739~Leu995
Form	Freeze-dried powder
Molecular Mass	Predicted Molecular Mass: 31.4kDa
Endotoxin	<1.0EU per 1ug (determined by the LAL method)
Purity	>95%
Applications	SDS-PAGE; WB; ELISA; IP.
Stability	The thermal stability is described by the loss rate. The loss rate was determined by accelerated thermal degradation test, that is, incubate the protein at 37°C for 48h, and no obvious degradation and precipitation were observed. The loss rate is less than 5% within the expiration date under appropriate storage condition.
Storage	Avoid repeated freeze/thaw cycles. Store at 2-8°C for one month. Aliquot and store at

 Tel: 1-631-559-9269 1-516-512-3133

 Email: info@creative-biomart.com  Fax: 1-631-938-8127

 45-1 Ramsey Road, Shirley, NY 11967, USA

-80°C for 12 months.

Storage buffer Supplied as lyophilized form in PBS, pH7.4, containing 5% sucrose, 0.01% sarcosyl.

Reconstitution Reconstitute in sterile PBS, pH7.2-pH7.4.

Isoelectric Point 6.1

GENE INFORMATION

Gene Name LRIG1 leucine rich repeats and immunoglobulin like domains 1 [Homo sapiens (human)]

Official Symbol LRIG1

Synonyms LRIG1; leucine rich repeats and immunoglobulin like domains 1; LIG1; LIG-1; leucine-rich repeats and immunoglobulin-like domains protein 1; leucine-rich repeat protein LRIG1; ortholog of mouse integral membrane glycoprotein LIG-1

Gene ID 26018

mRNA Refseq NM_015541.2

Protein Refseq NP_056356.2

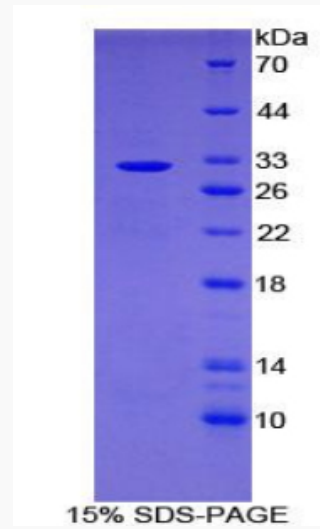
UniProt ID Q96JA1

 Tel: 1-631-559-9269 1-516-512-3133

 Email: info@creative-biomart.com  Fax: 1-631-938-8127

 45-1 Ramsey Road, Shirley, NY 11967, USA

SDS-PAGE



 Tel: 1-631-559-9269 1-516-512-3133

 Email: info@creative-biomart.com  Fax: 1-631-938-8127

 45-1 Ramsey Road, Shirley, NY 11967, USA