

Recombinant Human LRIG1 protein, His-tagged

Cat. No. LRIG1-7854H Lot. No. (See product label)

SPECIFICATION

Product Overview	Recombinant Human LRIG1 protein(Q96JA1-1)(Ala35-Ser779), fused with C-terminal His tag, was expressed in HEK293.
Species	Human
Source	HEK293
ProteinLength	Ala35-Ser779
Tag	C-His
Form	Supplied as 0.22µm filtered solution in 50mM MES, 150mM NaCl, 1mM EDTA (pH 5.0).
Bio-activity	Immobilized Human LRIG1, His Tag at 2ug/ml (100ul/well) on the plate. Dose response curve for Anti-LRIG1 Antibody, hFc Tag with the EC50 of 2.9ng/ml determined by ELISA.
Molecular Mass	The protein has a predicted MW of 83 kDa. Due to glycosylation, the protein migrates to 85-105 kDa based on Tris-Bis PAGE result.
Endotoxin	Less than 1EU per µg by the LAL method.
Purity	> 95% as determined by Tris-Bis PAGE

 Tel: 1-631-559-9269 1-516-512-3133

 Email: info@creative-biomart.com  Fax: 1-631-938-8127

 45-1 Ramsey Road, Shirley, NY 11967, USA

Storage Valid for 12 months from date of receipt when stored at -80°C. Recommend to aliquot the protein into smaller quantities for optimal storage. Please do not repeated freeze-thaw cycles.

Reconstitution It is recommended that sterile water be added to the vial to prepare a stock solution of 0.2 ug/ul. Centrifuge the vial at 4°C before opening to recover the entire contents.

GENE INFORMATION

Gene Name LRIG1 leucine-rich repeats and immunoglobulin-like domains 1 [Homo sapiens]

Official Symbol LRIG1

Synonyms LRIG1; leucine-rich repeats and immunoglobulin-like domains 1; leucine-rich repeats and immunoglobulin-like domains protein 1; DKFZP586O1624; leucine rich repeat protein LRIG1; LIG 1; LIG1; ortholog of mouse integral membrane glycoprotein LIG 1; leucine-rich repeat protein LRIG1; ortholog of mouse integral membrane glycoprotein LIG-1; LIG-1; DKFZp586O1624;

Gene ID 26018

mRNA Refseq NM_015541

Protein Refseq NP_056356

MIM 608868

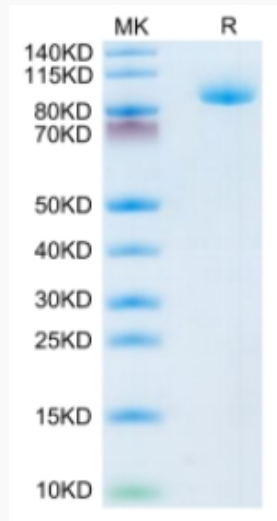
UniProt ID Q96JA1

 Tel: 1-631-559-9269 1-516-512-3133

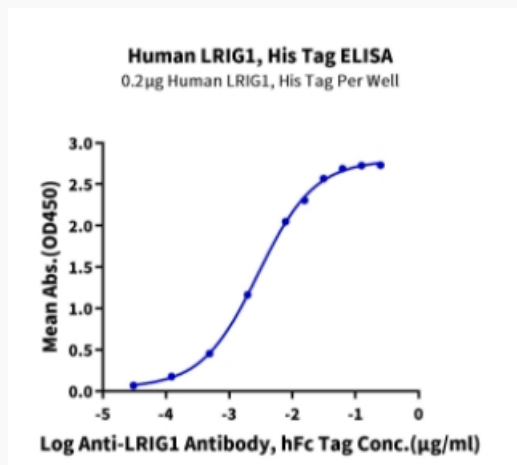
 Email: info@creative-biomart.com  Fax: 1-631-938-8127

 45-1 Ramsey Road, Shirley, NY 11967, USA

Tris-Bis PAGE



ELISA Data



 Tel: 1-631-559-9269 1-516-512-3133

 Email: info@creative-biomart.com  Fax: 1-631-938-8127

 45-1 Ramsey Road, Shirley, NY 11967, USA