

## Recombinant Human LRIG3 Protein, GST-tagged

**Cat. No.** LRIG3-4702H    **Lot. No.** (See product label)

### SPECIFICATION

<b>Product Overview</b>	Human LRIG3 partial ORF ( NP_700356, 1020 a.a. - 1119 a.a.) recombinant protein with GST-tag at N-terminal.
<b>Species</b>	Human
<b>Source</b>	Wheat Germ
<b>Description</b>	LRIG3 (Leucine Rich Repeats And Immunoglobulin Like Domains 3) is a Protein Coding gene. An important paralog of this gene is LRIG2.
<b>Molecular Mass</b>	36.74 kDa
<b>AA Sequence</b>	LDFSANPEPASVASSNSFMGTFGKALRRPHLDAYSSFGQPSDCQPRAFYLKAHSSP DLDSGSEEDGKERTDFQEENHICTFKQTLENYRTPNFQSYDLDT
<b>Applications</b>	Enzyme-linked Immunoabsorbent Assay Western Blot (Recombinant protein) Antibody Production Protein Array
<b>Notes</b>	Best use within three months from the date of receipt of this protein.
<b>Storage</b>	Store at -80 centigrade. Aliquot to avoid repeated freezing and thawing.
<b>Storage Buffer</b>	50 mM Tris-HCl, 10 mM reduced Glutathione, pH=8.0 in the elution buffer.

 Tel: 1-631-559-9269    1-516-512-3133

 Email: [info@creative-biomart.com](mailto:info@creative-biomart.com)     Fax: 1-631-938-8127

 45-1 Ramsey Road, Shirley, NY 11967, USA

## GENE INFORMATION

**Gene Name** LRIG3 leucine-rich repeats and immunoglobulin-like domains 3 [ Homo sapiens ]

**Official Symbol** LRIG3

**Synonyms** LRIG3; leucine-rich repeats and immunoglobulin-like domains 3; leucine-rich repeats and immunoglobulin-like domains protein 3; FLJ90440; KIAA3016; LIG-3; LIG3; FLJ26573;

**Gene ID** 121227

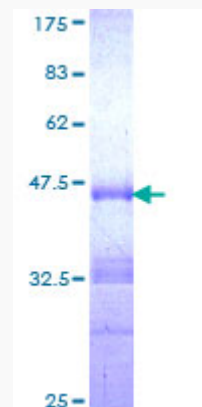
**mRNA Refseq** NM\_001136051

**Protein Refseq** NP\_001129523

**MIM** 608870

**UniProt ID** Q6UXM1

**Quality Control Testing**



12.5% SDS-PAGE Stained with Coomassie Blue

 Tel: 1-631-559-9269 1-516-512-3133

 Email: [info@creative-biomart.com](mailto:info@creative-biomart.com)  Fax: 1-631-938-8127

 45-1 Ramsey Road, Shirley, NY 11967, USA