

Recombinant Human LRP1 Protein (Ala20-His280), N-His tagged

Cat. No. LRP1-0712H Lot. No. (See product label)

SPECIFICATION

Product Overview	Recombinant Human CD91/LRP1 (Ala20-His280) fused with the N-His tag was expressed in E. coli.
Species	Human
Source	E.coli
ProteinLength	Ala20-His280
Form	Lyophilized powder/frozen liquid
Molecular Mass	30.66 kDa
Purity	>90% as determined by SDS-PAGE.
Notes	For research use only.
Storage	Use a manual defrost freezer and avoid repeated freeze thaw cycles. Store at 2 to 8 centigrade for one week. Store at -20 to -80 centigrade for twelve months from the date of receipt.
Storage Buffer	0.01M PBS, pH 7.4, 0.02% NLS
Reconstitution	Reconstitute in sterile water for a stock solution.

 Tel: 1-631-559-9269 1-516-512-3133

 Email: info@creative-biomart.com  Fax: 1-631-938-8127

 45-1 Ramsey Road, Shirley, NY 11967, USA

Shipping They are shipped out with dry ice/blue ice unless customers require otherwise.

GENE INFORMATION

Gene Name LRP1 low density lipoprotein receptor-related protein 1 [Homo sapiens (human)]

Official Symbol LRP1

Synonyms LRP1; low density lipoprotein receptor-related protein 1; A2MR, alpha 2 macroglobulin receptor, APR; prolow-density lipoprotein receptor-related protein 1; CD91; LRP; LRP-1; type V tgf-beta receptor; apolipoprotein E receptor; alpha-2-macroglobulin receptor; TbetaR-V/LRP-1/IGFBP-3 receptor; APR; A2MR; APOER; TGFB5; IGFBP3R; FLJ16451; MGC88725;

Gene ID 4035

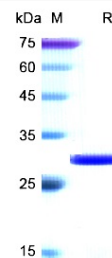
mRNA Refseq NM_002332

Protein Refseq NP_002323

MIM 107770

UniProt ID Q07954

SDS-PAGE



 Tel: 1-631-559-9269 1-516-512-3133

 Email: info@creative-biomart.com  Fax: 1-631-938-8127

 45-1 Ramsey Road, Shirley, NY 11967, USA