

## Recombinant Human LRP1 Protein, His-tagged

Cat. No. LRP1-2404H    Lot. No. (See product label)

### SPECIFICATION

<b>Product Overview</b>	Recombinant Human LRP1 Protein (Ala20-Asp429) with a N-His tag was expressed in E. coli.
<b>Species</b>	Human
<b>Source</b>	E.coli
<b>ProteinLength</b>	Ala20-Asp429
<b>Description</b>	This gene encodes a member of the low-density lipoprotein receptor family of proteins. The encoded preproprotein is proteolytically processed by furin to generate 515 kDa and 85 kDa subunits that form the mature receptor (PMID: 8546712). This receptor is involved in several cellular processes, including intracellular signaling, lipid homeostasis, and clearance of apoptotic cells. In addition, the encoded protein is necessary for the alpha 2-macroglobulin-mediated clearance of secreted amyloid precursor protein and beta-amyloid, the main component of amyloid plaques found in Alzheimer patients. Expression of this gene decreases with age and has been found to be lower than controls in brain tissue from Alzheimer's disease patients.
<b>Form</b>	Freeze-dried powder
<b>Molecular Mass</b>	Predicted Molecular Mass: 49.2 kDa Accurate Molecular Mass: 49 kDa
<b>Endotoxin</b>	<1.0 EU per 1g (determined by the LAL method).

 Tel: 1-631-559-9269    1-516-512-3133

 Email: [info@creative-biomart.com](mailto:info@creative-biomart.com)     Fax: 1-631-938-8127

 45-1 Ramsey Road, Shirley, NY 11967, USA

<b>Purity</b>	> 90%
<b>Applications</b>	Positive Control; Immunogen; SDS-PAGE; WB.
<b>Stability</b>	The thermal stability is described by the loss rate. The loss rate was determined by accelerated thermal degradation test, that is, incubate the protein at 37 centigrade for 48h, and no obvious degradation and precipitation were observed. The loss rate is less than 5% within the expiration date under appropriate storage condition.
<b>Storage</b>	Avoid repeated freeze/thaw cycles. Store at 2-8 centigrade for one month. Aliquot and store at -80 centigrade for 12 months.
<b>Storage Buffer</b>	PBS, pH7.4, containing 0.01% SKL, 1mM DTT, 5% Trehalose and Proclin300.
<b>Reconstitution</b>	Reconstitute in 10mM PBS (pH7.4) to a concentration of 0.1-1.0 mg/mL. Do not vortex.

## GENE INFORMATION

<b>Gene Name</b>	LRP1 low density lipoprotein receptor-related protein 1 [ Homo sapiens (human) ]
<b>Official Symbol</b>	LRP1
<b>Synonyms</b>	LRP1; low density lipoprotein receptor-related protein 1; A2MR, alpha 2 macroglobulin receptor, APR; prolow-density lipoprotein receptor-related protein 1; CD91; LRP; LRP-1; type V tgf-beta receptor; apolipoprotein E receptor; alpha-2-macroglobulin receptor; TbetaR-V/LRP-1/IGFBP-3 receptor; APR; A2MR; APOER; TGFBP5; IGFBP3R; FLJ16451; MGC88725;
<b>Gene ID</b>	4035

 Tel: 1-631-559-9269 1-516-512-3133

 Email: [info@creative-biomart.com](mailto:info@creative-biomart.com)  Fax: 1-631-938-8127

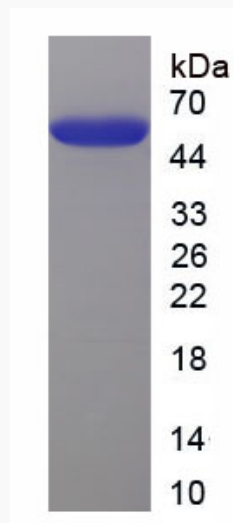
 45-1 Ramsey Road, Shirley, NY 11967, USA

mRNA Refseq [NM\\_002332](#)

Protein Refseq [NP\\_002323](#)

MIM [107770](#)

UniProt ID [Q07954](#)



 Tel: 1-631-559-9269 1-516-512-3133

 Email: [info@creative-biomart.com](mailto:info@creative-biomart.com)  Fax: 1-631-938-8127

 45-1 Ramsey Road, Shirley, NY 11967, USA