

## Recombinant Human LRP11 Protein, GST-tagged

Cat. No. LRP11-4695H    Lot. No. (See product label)

### SPECIFICATION

<b>Product Overview</b>	Human LRP11 full-length ORF ( NP_116221.2, 1 a.a. - 500 a.a.) recombinant protein with GST-tag at N-terminal.
<b>Species</b>	Human
<b>Source</b>	Wheat Germ
<b>Description</b>	LRP11 (LDL Receptor Related Protein 11) is a Protein Coding gene. An important paralog of this gene is KIAA0319L.
<b>Molecular Mass</b>	79.8 kDa
<b>AA Sequence</b>	MASVAQESAGSQRRLLPPRHGALRGLLLLCLWLPSGRAALPPAAPLSELHAQLSGVE QLLEEFRRQLQQERPQEELELELRAGGGPQEDCPGRGSGGYSAMPDAIIRTKDSL AGASFLRAPAAVRGWRQCVAACCSEPRCSVAVVELPRRPAPPAAVLGCYLFNCTA RGRNVCKFALHSGYSSYSLSRAPDGAALATARASPRQEKDAPPLSKAGQDVVLHLP TDGVVLDGRESTDDHAIVQYEWALLQGDPVDMKVPQSGTLKLSHLQEGTYTFQLT VTDTAGQRSSDNVSVTVLRAAYSTGGCLHTCSRYHFFCDDGCCIDITLACDGVQQC PDGSDDFCQNLGLDHKMTHTAASPALPRTTGPSEDAGGDSLVEKSQKATAPNK PPALSNTTEKRNHSAFWGPESQIIPVMPDSSSSGKNRKEESYIFESKGDGGGGGEHPA PETGAVLPLALGLAITALLLLMVACRLRLVKQKLLKARPITSEESDYLINGMYL
<b>Applications</b>	Enzyme-linked Immunoabsorbent Assay Western Blot (Recombinant protein) Antibody Production

 Tel: 1-631-559-9269    1-516-512-3133

 Email: [info@creative-biomart.com](mailto:info@creative-biomart.com)     Fax: 1-631-938-8127

 45-1 Ramsey Road, Shirley, NY 11967, USA

**Protein Array**

<b>Notes</b>	Best use within three months from the date of receipt of this protein.
<b>Storage</b>	Store at -80 centigrade. Aliquot to avoid repeated freezing and thawing.
<b>Storage Buffer</b>	50 mM Tris-HCl, 10 mM reduced Glutathione, pH=8.0 in the elution buffer.

**GENE INFORMATION**

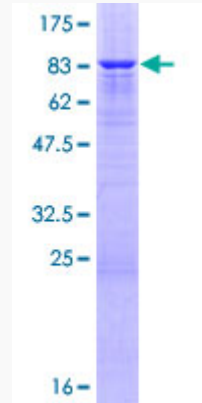
<b>Gene Name</b>	LRP11 low density lipoprotein receptor-related protein 11 [ Homo sapiens ]
<b>Official Symbol</b>	LRP11
<b>Synonyms</b>	LRP11; low density lipoprotein receptor-related protein 11; low-density lipoprotein receptor-related protein 11; bA350J20.3; MANSC3; LRP-11; FLJ14735; MGC39092;
<b>Gene ID</b>	84918
<b>mRNA Refseq</b>	NM_032832
<b>Protein Refseq</b>	NP_116221
<b>UniProt ID</b>	Q86VZ4

 Tel: 1-631-559-9269 1-516-512-3133

 Email: [info@creative-biomart.com](mailto:info@creative-biomart.com)  Fax: 1-631-938-8127

 45-1 Ramsey Road, Shirley, NY 11967, USA

**Quality Control  
Testing**



12.5% SDS-PAGE Stained with Coomassie Blue

 Tel: 1-631-559-9269 1-516-512-3133

 Email: [info@creative-biomart.com](mailto:info@creative-biomart.com)  Fax: 1-631-938-8127

 45-1 Ramsey Road, Shirley, NY 11967, USA