

# Recombinant Human LRP1B Protein (Leu31-Lys194), N-His tagged

Cat. No. LRP1B-3778H Lot. No. (See product label)

## SPECIFICATION

<b>Product Overview</b>	Recombinant human LRP1B (Leu31-Lys194) fused with the N-His tag was expressed in E. coli.
<b>Species</b>	Human
<b>Source</b>	E.coli
<b>ProteinLength</b>	Leu31-Lys194
<b>Description</b>	This gene encodes a member of the low density lipoprotein (LDL) receptor family. These receptors play a wide variety of roles in normal cell function and development due to their interactions with multiple ligands. Disruption of this gene has been reported in several types of cancer.
<b>Form</b>	Lyophilized powder/frozen liquid
<b>Molecular Mass</b>	20.55 kDa
<b>Purity</b>	>90% as determined by SDS-PAGE.
<b>Notes</b>	For research use only.
<b>Storage</b>	Use a manual defrost freezer and avoid repeated freeze thaw cycles. Store at 2 to 8 centigrade for one week. Store at -20 to -80 centigrade for twelve months from the

 Tel: 1-631-559-9269 1-516-512-3133

 Email: [info@creative-biomart.com](mailto:info@creative-biomart.com)  Fax: 1-631-938-8127

 45-1 Ramsey Road, Shirley, NY 11967, USA

	date of receipt.
<b>Storage Buffer</b>	0.01M PBS, pH 7.4, 0.02% NLS
<b>Reconstitution</b>	Reconstitute in sterile water for a stock solution.
<b>Shipping</b>	They are shipped out with dry ice/blue ice unless customers require otherwise.

## GENE INFORMATION

<b>Gene Name</b>	LRP1B LDL receptor related protein 1B [ Homo sapiens (human) ]
<b>Official Symbol</b>	LRP1B
<b>Synonyms</b>	LRP1B; LDL receptor related protein 1B; LRP-1B; LRPDIT; LRP-DIT; low-density lipoprotein receptor-related protein 1B; LRP-deleted in tumors; low density lipoprotein receptor related protein-deleted in tumor; low density lipoprotein receptor-related protein 1B; low density lipoprotein-related protein 1B (deleted in tumors)
<b>Gene ID</b>	53353
<b>mRNA Refseq</b>	NM_018557
<b>Protein Refseq</b>	NP_061027
<b>MIM</b>	608766
<b>UniProt ID</b>	Q9NZR2

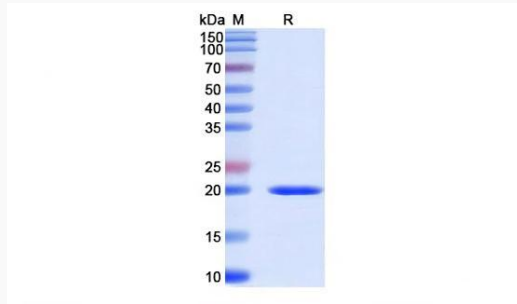
 Tel: 1-631-559-9269 1-516-512-3133

 Email: [info@creative-biomart.com](mailto:info@creative-biomart.com)  Fax: 1-631-938-8127

 45-1 Ramsey Road, Shirley, NY 11967, USA



SDS-PAGE



Tel: 1-631-559-9269 1-516-512-3133

Email: [info@creative-biomart.com](mailto:info@creative-biomart.com) Fax: 1-631-938-8127

45-1 Ramsey Road, Shirley, NY 11967, USA