

## Recombinant Human LRP1B Protein, GST-tagged

Cat. No. LRP1B-4693H Lot. No. (See product label)

### SPECIFICATION

<b>Product Overview</b>	Human LRP1B partial ORF ( NP_061027, 111 a.a. - 200 a.a.) recombinant protein with GST-tag at N-terminal.
<b>Species</b>	Human
<b>Source</b>	Wheat Germ
<b>Description</b>	LRP1B belongs to the low density lipoprotein (LDL) receptor gene family. These receptors play a wide variety of roles in normal cell function and development due to their interactions with multiple ligands (Liu et al., 2001 [PubMed 11384978]).[supplied by OMIM
<b>Molecular Mass</b>	35.42 kDa
<b>AA Sequence</b>	VHCQELLSNCQQLNCQYKCTMVRNSTRCYCEDGFEITEDGRSCKDQDECAVYGTC SQTCRNTHGSYTCSCVEGYLMQPDNRSCKAKIEPT
<b>Applications</b>	Enzyme-linked Immunoabsorbent Assay Western Blot (Recombinant protein) Antibody Production Protein Array
<b>Notes</b>	Best use within three months from the date of receipt of this protein.
<b>Storage</b>	Store at -80 centigrade. Aliquot to avoid repeated freezing and thawing.

 Tel: 1-631-559-9269 1-516-512-3133

 Email: [info@creative-biomart.com](mailto:info@creative-biomart.com)  Fax: 1-631-938-8127

 45-1 Ramsey Road, Shirley, NY 11967, USA

**Storage Buffer** 50 mM Tris-HCl, 10 mM reduced Glutathione, pH=8.0 in the elution buffer.

## GENE INFORMATION

**Gene Name** LRP1B LDL receptor related protein 1B [ Homo sapiens (human) ]

**Official Symbol** LRP1B

**Synonyms** LRP1B; LDL receptor related protein 1B; LRP-1B; LRPDIT; LRP-DIT; low-density lipoprotein receptor-related protein 1B; LRP-deleted in tumors; low density lipoprotein receptor related protein-deleted in tumor; low density lipoprotein receptor-related protein 1B; low density lipoprotein-related protein 1B (deleted in tumors)

**Gene ID** <https://www.ncbi.nlm.nih.gov/gene/53353>

**mRNA Refseq** NM\_018557

**Protein Refseq** NP\_061027

**MIM** 608766

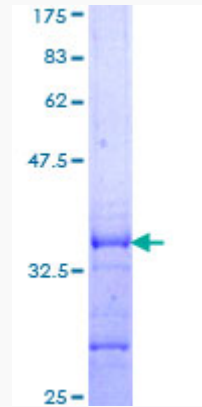
**UniProt ID** Q9NZR2

 Tel: 1-631-559-9269 1-516-512-3133

 Email: [info@creative-biomart.com](mailto:info@creative-biomart.com)  Fax: 1-631-938-8127

 45-1 Ramsey Road, Shirley, NY 11967, USA

**Quality Control  
Testing**



12.5% SDS-PAGE Stained with Coomassie Blue

 Tel: 1-631-559-9269 1-516-512-3133

 Email: [info@creative-biomart.com](mailto:info@creative-biomart.com)  Fax: 1-631-938-8127

 45-1 Ramsey Road, Shirley, NY 11967, USA