

Recombinant Human LRP2 Protein (1186-1389 aa), His-tagged

Cat. No. LRP2-1448H Lot. No. (See product label)

SPECIFICATION

Product Overview	Recombinant Human LRP2 Protein (1186-1389 aa) is produced by Yeast expression system. This protein is fused with a 6xHis tag at the N-terminal. Research Area: Immunology. Protein Description: Partial.
Species	Human
Source	Yeast
ProteinLength	1186-1389 aa
Description	Acts together with cubilin to mediate HDL endocytosis . May participate in regulation of parathyroid-hormone and para-thyroid-hormone-related protein release.
Form	Tris-based buffer,50% glycerol
Molecular Mass	24.2 kDa
AA Sequence	NCTASQFKCASGDKCIGVTNRCDGVFDCSDNSDEAGCPTRPPGMCHSDEFQCQE DGICIPNFWECDGHPDCLYGSDEHNACVPKTCPSYFHCDNGNCIHRWLCDRDN DCGDMSDEKDCPTQPFRCPSWQWQCLGHNICVNLSVVCDFGIDCPNGTDESPLCN GNSCSDFNGGCTHECVQEPFGAKCLCPLGFLLANDSKTCE
Purity	> 90% as determined by SDS-PAGE.
Notes	Repeated freezing and thawing is not recommended. Store working aliquots at 4

 Tel: 1-631-559-9269 1-516-512-3133

 Email: info@creative-biomart.com  Fax: 1-631-938-8127

 45-1 Ramsey Road, Shirley, NY 11967, USA

centigrade for up to one week.

Storage

The shelf life is related to many factors, storage state, buffer ingredients, storage temperature and the stability of the protein itself. Generally, the shelf life of liquid form is 6 months at -20 centigrade/-80 centigrade. The shelf life of lyophilized form is 12 months at -20 centigrade/-80 centigrade.

Concentration

A hardcopy of COA with reconstitution instruction is sent along with the products.

GENE INFORMATION

Gene Name [LRP2 low density lipoprotein receptor-related protein 2 \[Homo sapiens \]](#)

Official Symbol [LRP2](#)

Synonyms LRP2; DBS; gp330; megalin; LRP-2; glycoprotein 330; GP330;

Gene ID [4036](#)

mRNA Refseq [NM_004525](#)

Protein Refseq [NP_004516](#)

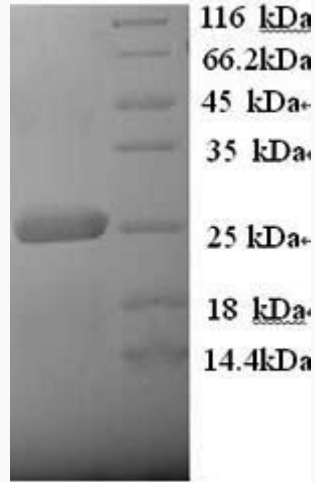
MIM [600073](#)

UniProt ID [P98164](#)

 Tel: 1-631-559-9269 1-516-512-3133

 Email: info@creative-biomart.com  Fax: 1-631-938-8127

 45-1 Ramsey Road, Shirley, NY 11967, USA



(Tris-Glycine gel) Discontinuous SDS-PAGE (reduced) with 5% enrichment gel and 15% separation gel.

 Tel: 1-631-559-9269 1-516-512-3133

 Email: info@creative-biomart.com  Fax: 1-631-938-8127

 45-1 Ramsey Road, Shirley, NY 11967, USA