

Recombinant Human LRP2 protein, His-tagged

Cat. No. LRP2-7443H Lot. No. (See product label)

SPECIFICATION

| | |
|-------------------------|---|
| Product Overview | Recombinant Human LRP2 protein(P98164)(1186-1389aa), fused with C-terminal His tag, was expressed in Yeast. |
| Species | Human |
| Source | Yeast |
| ProteinLength | 1186-1389aa |
| Tag | C-His |
| Form | If the delivery form is liquid, the default storage buffer is Tris/PBS-based buffer, 5%-50% glycerol. If the delivery form is lyophilized powder, the buffer before lyophilization is Tris/PBS-based buffer, 6% Trehalose, pH 8.0. |
| Molecular Mass | 23.7 kDa |
| Purity | Greater than 90% as determined by SDS-PAGE. |
| Storage | Store at -20°C/-80°C upon receipt, aliquoting is necessary for mutiple use. Avoid repeated freeze-thaw cycles. |
| Reconstitution | We recommend that this vial be briefly centrifuged prior to opening to bring the contents to the bottom. Please reconstitute protein in deionized sterile water to a concentration of 0.1-1.0 mg/mL. We recommend to add 5-50% of glycerol (final |

 Tel: 1-631-559-9269 1-516-512-3133

 Email: info@creative-biomart.com  Fax: 1-631-938-8127

 45-1 Ramsey Road, Shirley, NY 11967, USA

concentration) and aliquot for long-term storage at -20°C/-80°C.

AA Sequence

NCTASQFKCASGDKCIGVTNRCDGVFDCSDNSDEAGCPTRPPGMCHSDEFQCQE
 DGICIPNFWECDGHPDCLYGSDEHNACVPKTCPSSYFHCDNGNCIHRAWLCDRDN
 DCGDMSDEKDCPTQPFRCPSWQWQCLGHNICVNLSVVCDFGIFDCPNGTDESPLCN
 GNSCSDFNNGGCTHECVQEPFGAKCLCPLGFLLANDSKTCE

GENE INFORMATION

Gene Name LRP2 low density lipoprotein receptor-related protein 2 [Homo sapiens]

Official Symbol LRP2

Synonyms LRP2; low density lipoprotein receptor-related protein 2; low-density lipoprotein receptor-related protein 2; DBS; gp330; megalin; LRP-2; glycoprotein 330; calcium sensor protein; Heymann nephritis antigen homolog; GP330;

Gene ID 4036

mRNA Refseq NM_004525

Protein Refseq NP_004516

MIM 600073

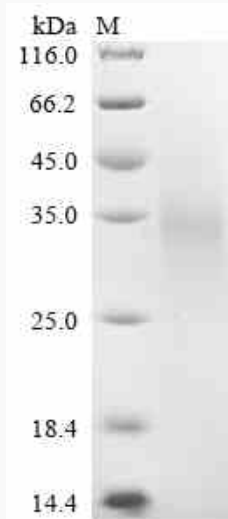
UniProt ID P98164

 Tel: 1-631-559-9269 1-516-512-3133

 Email: info@creative-biomart.com  Fax: 1-631-938-8127

 45-1 Ramsey Road, Shirley, NY 11967, USA

SDS-PAGE



 Tel: 1-631-559-9269 1-516-512-3133

 Email: info@creative-biomart.com  Fax: 1-631-938-8127

 45-1 Ramsey Road, Shirley, NY 11967, USA