

## Recombinant Human LRP2 protein, mFc-tagged

Cat. No. LRP2-8754H Lot. No. (See product label)

### SPECIFICATION

<b>Product Overview</b>	Recombinant Human LRP2 protein(P98164)(1186-1389aa), fused with C-terminal mFc tag, was expressed in HEK293.
<b>Species</b>	Human
<b>Source</b>	HEK293
<b>ProteinLength</b>	1186-1389aa
<b>Tag</b>	C-mFc
<b>Form</b>	If the delivery form is liquid, the default storage buffer is Tris/PBS-based buffer, 5%-50% glycerol. If the delivery form is lyophilized powder, the buffer before lyophilization is Tris/PBS-based buffer, 6% Trehalose, pH 8.0.
<b>Molecular Mass</b>	50.8 kDa
<b>Purity</b>	Greater than 85% as determined by SDS-PAGE.
<b>Storage</b>	Store at -20°C/-80°C upon receipt, aliquoting is necessary for mutiple use. Avoid repeated freeze-thaw cycles.
<b>Reconstitution</b>	We recommend that this vial be briefly centrifuged prior to opening to bring the contents to the bottom. Please reconstitute protein in deionized sterile water to a concentration of 0.1-1.0 mg/mL. We recommend to add 5-50% of glycerol (final

 Tel: 1-631-559-9269 1-516-512-3133

 Email: [info@creative-biomart.com](mailto:info@creative-biomart.com)  Fax: 1-631-938-8127

 45-1 Ramsey Road, Shirley, NY 11967, USA



concentration) and aliquot for long-term storage at -20°C/-80°C.

**AA Sequence**

NCTASQFKCASGDKCIGVTNRCDGVFDCSDNSDEAGCPTRPPGMCHSDEFQCQE  
DGICIPNFWECDGHPDCLYGSDEHNACVPKTCPSSYFHCDNGNCIHRAWLCDRDN  
DCGDMSDEKDCPTQPFRCPSWQWQCLGHNICVNLSVVCDFGIFDCPNGTDESPLCN  
GNSCSDFNNGGCTHECVQEPFGAKCLCPLGFLANDSKTCE

**GENE INFORMATION**

**Gene Name** LRP2 low density lipoprotein receptor-related protein 2 [ Homo sapiens ]

**Official Symbol** LRP2

**Synonyms** LRP2; low density lipoprotein receptor-related protein 2; low-density lipoprotein receptor-related protein 2; DBS; gp330; megalin; LRP-2; glycoprotein 330; calcium sensor protein; Heymann nephritis antigen homolog; GP330;

**Gene ID** 4036

**mRNA Refseq** NM\_004525

**Protein Refseq** NP\_004516

**MIM** 600073

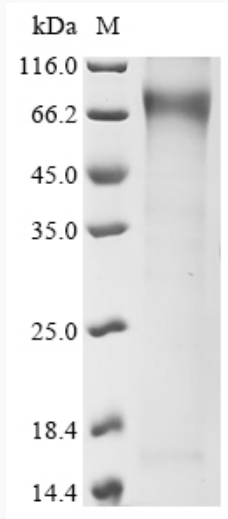
**UniProt ID** P98164

Tel: 1-631-559-9269 1-516-512-3133

Email: [info@creative-biomart.com](mailto:info@creative-biomart.com) Fax: 1-631-938-8127

45-1 Ramsey Road, Shirley, NY 11967, USA

**SDS-PAGE**



 Tel: 1-631-559-9269 1-516-512-3133

 Email: [info@creative-biomart.com](mailto:info@creative-biomart.com)  Fax: 1-631-938-8127

 45-1 Ramsey Road, Shirley, NY 11967, USA