

Recombinant Human LRP2BP Protein, Myc/DDK-tagged, C13 and N15-labeled

Cat. No. LRP2BP-2138H **Lot. No.** (See product label)

SPECIFICATION

Product Overview	LRP2BP MS Standard C13 and N15-labeled recombinant protein (NP_060879) with a C-terminal MYC/DDK tag, was expressed in HEK293 cells.
Species	Human
Source	HEK293
Description	May act as an adapter that regulates LRP2 function.
Molecular Mass	39.6 kDa
AA Sequence	<p>MKLTSEKLPKNPFYASVSQYAAKNQKFFQWKKEKTDYTHANLVDKALQLLKERILKG DTLAYFLRGQLYFEEGWYEEALEQFEEIKEKDHQATYQLGVMYYDGLGTTLDAEKG VDYMKKILDSPCKARHLKFAAAYNLGRAYYEGKGVKRSNEEAERLWLIAADNGNP KASVKAQSMLGLYYSTKEPKELEKAFYWHSEACGNGNLESQGALGLMYLYGQGIR QDTEAALQCLREAAERGNVYAQGNLVEYYYKMKFFTKCVAFSKRIADYDEVHDIPMI AQVTDCLPEFIGRGMAMASFYHARCLQLGLGITRDETTAKHYYSKACRLNPALADEL HSLLRQRITRTRPLEQKLISEEDLAANDILDYKDDDDKV</p>
Purity	> 80% as determined by SDS-PAGE and Coomassie blue staining
Stability	Stable for 3 months from receipt of products under proper storage and handling conditions.

 Tel: 1-631-559-9269 1-516-512-3133

 Email: info@creative-biomart.com  Fax: 1-631-938-8127

 45-1 Ramsey Road, Shirley, NY 11967, USA

Storage	Store at -80 centigrade. Avoid repeated freeze-thaw cycles.
----------------	---

Concentration	50 µg/mL as determined by BCA
----------------------	-------------------------------

Storage Buffer	100 mM glycine, 25 mM Tris-HCl, pH 7.3.
-----------------------	---

GENE INFORMATION

Gene Name	LRP2BP LRP2 binding protein [Homo sapiens (human)]
------------------	--

Official Symbol	LRP2BP
------------------------	--------

Synonyms	LRP2BP; LRP2 binding protein; LRP2-binding protein; DKFZp761O0113; megBP; megalin-binding protein; FLJ44965;
-----------------	--

Gene ID	55805
----------------	-------

mRNA Refseq	NM_018409
--------------------	-----------

Protein Refseq	NP_060879
-----------------------	-----------

MIM	619020
------------	--------

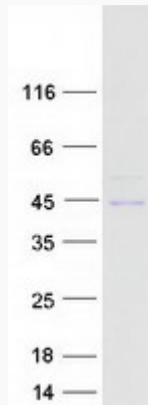
UniProt ID	Q9P2M1
-------------------	--------

 Tel: 1-631-559-9269 1-516-512-3133

 Email: info@creative-biomart.com  Fax: 1-631-938-8127

 45-1 Ramsey Road, Shirley, NY 11967, USA

SDS-PAGE



 Tel: 1-631-559-9269 1-516-512-3133

 Email: info@creative-biomart.com  Fax: 1-631-938-8127

 45-1 Ramsey Road, Shirley, NY 11967, USA