

Recombinant Full Length Human LRP5 Protein, C-Flag-tagged

Cat. No. LRP5-245HFL Lot. No. (See product label)

SPECIFICATION

Product Overview	Recombinant Full Length Human LRP5 Protein, fused to Flag-tag at C-terminus, was expressed in Mammalian cells.
Species	Human
Source	Mammalian Cells
Description	This gene encodes a transmembrane low-density lipoprotein receptor that binds and internalizes ligands in the process of receptor-mediated endocytosis. This protein also acts as a co-receptor with Frizzled protein family members for transducing signals by Wnt proteins and was originally cloned on the basis of its association with type 1 diabetes mellitus in humans. This protein plays a key role in skeletal homeostasis and many bone density related diseases are caused by mutations in this gene. Mutations in this gene also cause familial exudative vitreoretinopathy. Alternative splicing results in multiple transcript variants.
Form	25 mM Tris HCl, pH 7.3, 100 mM glycine, 10% glycerol.
Molecular Mass	179 kDa
AA Sequence	MEAAPPGPPWPLLLLLLLLLLALCGCPAPAAASPLLLFANRRDVRLVDAGGVKLESTIV VSGLEDAAAVDF QFSKGAVYWTDVSEEAIKQTYLNQTGAAVQNVVISGLVSPDGLA CDWVGKCLYWTDSETNRIEVANLNGT SRKVLFWQDLDPRAIALDPAHGYMYWTD WGETPRIERAGMDGSTRKIIVDSDIYWPNGLTIDLEEQKLY WADAKLSFIHRANLDG SFRQKVVEGSLTHPFALTLSGDTLYWTDWQTRSIHACNKRTGGKRKEILSALYS PM

 Tel: 1-631-559-9269 1-516-512-3133

 Email: info@creative-biomart.com  Fax: 1-631-938-8127

 45-1 Ramsey Road, Shirley, NY 11967, USA

DIQVLSQERQPPFFHTRCEEDNGGCShLCLLSPSEPFYTCACPTGVQLQDNGRTCKA
GAEEVLLLARRT DLRRISLDTPDFDIDLQVDDIRHAIADYDPLEGYVYWTDDEVRAI
RRAYLDGSGAQLVNTEINDPDG IAVDWVARNLYWTDGTDRIEVTRLNGTSRKILV
SEDLDEPRAIALHPVMGLMYWTDWGENPKIECANLD GQERRVLNASLGWPNGLA
LDLQEGKLYWGDAKTDKIEVINVDGTKRRTLLEDKLPHFIFGFTLLGDFIYW TDWQRR
SIERVHKVKASRDVIIDQLPDLMLGLKAVNVAKVVGTPCADRNGGCShLCFFTPHAT
RCGCPIG LELLSDMKTCIVPEAFLVFTSRAAIHRISLETNNNDVAIPLTGVKEASALDF
DVSNNHIYWTDVSLKTIS RAFMNGSSVEHVVEFGLDYPEGMAVDWMGKNLYWADT
GTNRIEVARLDGQFRQVLVWRDLNPRSLALDP TKGYYWTEWGGKPRIVRAFMD
GTNCMTLVDKVGRANDLTIDYADQRLYWTDLDTNMIESSNMLGQERVV IADDLPHP
FGLTQYSDYIYWTDWNLHSIERADKTSGRNRTLIQGHLDVMDILVFHSSRQDGLND
CMHNN GQCGQLCLAIPEGHRCGCASHYTLDPSSRNCSPPTTFLFSQKSAISRMIP
DDQHSPDLILPLHGLRNVK AIDYDPLDKFIYWVDGRQNIKRAKDDGTQPFVLTSLSQ
GQNPDQRPHDLSIDIYSRTLFWTCEATNTINV HRLSGEAMGVVLRGDRDKPRAIVV
NAERGYLYFTNMQDRAAKIERAALDGTREVLFTTGLIRPVALVVD NTLGKLFVWDA
DLKRIESCDLGSANRLTEDANIVQPLGLTILGKHLWIDRQQMIERVEKTTGDKRT
R IQGRVAHLTGIHAVEEVSLEEFSAHPCARDNGGCShICIAKGDGTPRCSCPVHLVL
LQNLLTCGEPPTCS PDQFACATGEIDCIPGAWRCDGFPECCDDQSDEEGCPVCSAA
QFPCARGQCVDLRLRCDCGEADCQDRSDEV DCDAICLPNQFRCASGQCVLIKQQCD
SFPDCIDGSDELMCEITKPPSDDSPAHSIAIGPVIGIILSLFVM GGVYFVCQRVVCQR
YAGANGPFPHEYVSGTPHVPLNFIAPGGSQHGPFTGIACGKSMSSVSLMGGRGG
V PLYDRNHVTGASSSSSSSTKATLYPPILNPPSPATDPSLYNMDMFYSSNIPATAR
PYRPYIIRGMAPPT TPCSTDVCDSDYSASRWKASKYYLDLNSDSDPYPPPPTPHSQ
YLSAEDSCPPSPATERSYFHLFPPPPSP
CTDSSTRTRPLEQKLISEEDLAANDILDYKDDDDKV

Purity > 80% as determined by SDS-PAGE and Coomassie blue staining.

Stability Stable for 12 months from the date of receipt of the product under proper storage and handling conditions. Avoid repeated freeze-thaw cycles.

 Tel: 1-631-559-9269 1-516-512-3133

 Email: info@creative-biomart.com  Fax: 1-631-938-8127

 45-1 Ramsey Road, Shirley, NY 11967, USA

Storage	Store at -80 centigrade.
Concentration	>50 ug/mL as determined by microplate BCA method.
Preparation	Recombinant protein was captured through anti-DDK affinity column followed by conventional chromatography steps.
Protein Families	Druggable Genome, Transmembrane
Protein Pathways	Wnt signaling pathway
Full Length	Full L.

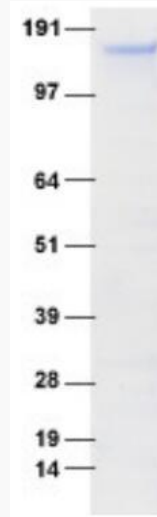
GENE INFORMATION

Gene Name	LRP5 LDL receptor related protein 5 [Homo sapiens (human)]
Official Symbol	LRP5
Synonyms	HBM; LR3; OPS; EVR1; EVR4; LRP7; OPPG; BMND1; LRP-5; LRP-7; OPTA1; PCLD4; VBCH2
Gene ID	4041
mRNA Refseq	NM_002335.4
Protein Refseq	NP_002326.2
MIM	603506
UniProt ID	O75197

 Tel: 1-631-559-9269 1-516-512-3133

 Email: info@creative-biomart.com  Fax: 1-631-938-8127

 45-1 Ramsey Road, Shirley, NY 11967, USA



Coomassie blue staining of purified LRP5 protein.

 Tel: 1-631-559-9269 1-516-512-3133

 Email: info@creative-biomart.com  Fax: 1-631-938-8127

 45-1 Ramsey Road, Shirley, NY 11967, USA