

## Active Recombinant Human LRP5 protein, hFc-tagged

Cat. No. LRP5-285H Lot. No. (See product label)

### SPECIFICATION

<b>Product Overview</b>	Active Recombinant Human LRP5 protein(Glu644-Gln1263)(O75197-1), fused with C-terminal hFc tag, was expressed in HEK293.
<b>Species</b>	Human
<b>Source</b>	HEK293
<b>ProteinLength</b>	Glu644-Gln1263
<b>Form</b>	Supplied as 0.22µm filtered solution in PBS, 100mM L-arginine (pH 7.4).
<b>Bio-activity</b>	Immobilized Human DKK1, His Tag at 2µg/ml (100µl/well) on the plate. Dose response curve for Human LPR-5, hFc Tag with the EC50 of 1.04µg/ml determined by ELISA.
<b>Molecular Mass</b>	The protein has a predicted MW of 96.51 kDa. Due to glycosylation, the protein migrates to 100-115 kDa based on Tris-Bis PAGE result.
<b>Endotoxin</b>	Less than 1EU per µg by the LAL method.
<b>Purity</b>	> 95% as determined by Tris-Bis PAGE.
<b>Storage</b>	Valid for 12 months from date of receipt when stored at -80°C. Recommend to aliquot the protein into smaller quantities for optimal storage. Please minimize freeze-thaw cycles.

 Tel: 1-631-559-9269 1-516-512-3133

 Email: [info@creative-biomart.com](mailto:info@creative-biomart.com)  Fax: 1-631-938-8127

 45-1 Ramsey Road, Shirley, NY 11967, USA

**Reconstitution** It is recommended that sterile water be added to the vial to prepare a stock solution of 0.2 ug/ul. Centrifuge the vial at 4°C before opening to recover the entire contents.

## GENE INFORMATION

**Gene Name** LRP5 low density lipoprotein receptor-related protein 5 [ Homo sapiens ]

**Official Symbol** LRP5

**Synonyms** LRP5; low density lipoprotein receptor-related protein 5; EVR1, exudative vitreoretinopathy 1 , LRP7, OPPG, osteoporosis pseudoglioma syndrome; low-density lipoprotein receptor-related protein 5; BMND1; HBM; LR3; OPS; LRP-5; low density lipoprotein receptor-related protein 7; EVR1; EVR4; LRP7; OPPG; OPTA1; VBCH2;

**Gene ID** 4041

**mRNA Refseq** NM\_002335

**Protein Refseq** NP\_002326

**MIM** 603506

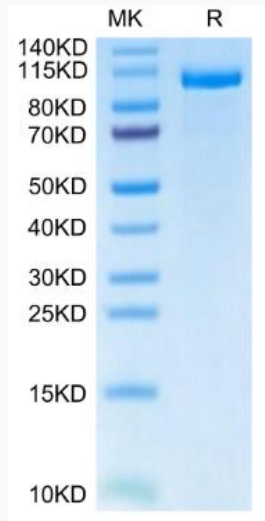
**UniProt ID** O75197

 Tel: 1-631-559-9269 1-516-512-3133

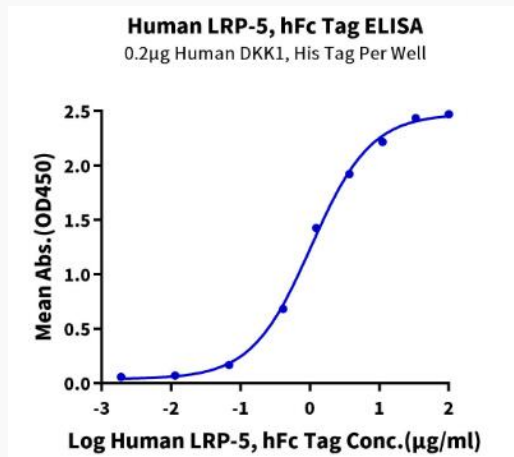
 Email: [info@creative-biomart.com](mailto:info@creative-biomart.com)  Fax: 1-631-938-8127

 45-1 Ramsey Road, Shirley, NY 11967, USA

**SDS-PAGE**



**Activity**



 Tel: 1-631-559-9269 1-516-512-3133

 Email: [info@creative-biomart.com](mailto:info@creative-biomart.com)  Fax: 1-631-938-8127

 45-1 Ramsey Road, Shirley, NY 11967, USA