

Recombinant Human LRP5 Protein, GST-tagged

Cat. No. LRP5-4689H Lot. No. (See product label)

SPECIFICATION

Product Overview	Human LRP5 partial ORF (NP_002326.1, 41 a.a. - 130 a.a.) recombinant protein with GST-tag at N-terminal.
Species	Human
Source	Wheat Germ
Description	This gene encodes a transmembrane low-density lipoprotein receptor that binds and internalizes ligands in the process of receptor-mediated endocytosis. This protein also acts as a co-receptor with Frizzled protein family members for transducing signals by Wnt proteins and was originally cloned on the basis of its association with type 1 diabetes mellitus in humans. This protein plays a key role in skeletal homeostasis and many bone density related diseases are caused by mutations in this gene. Mutations in this gene also cause familial exudative vitreoretinopathy. Alternative splicing results in multiple transcript variants. [provided by RefSeq, May 2014]
Molecular Mass	35.64 kDa
AA Sequence	RDVRLVDAGGVKLESTIVVSGLEDAAAVDFQFSKGAVYWTDVSEEAIKQTYLNQTG AAVQNVVISGLVSPDGLACDWVGKKLYWTDSETN
Applications	Enzyme-linked Immunoabsorbent Assay Western Blot (Recombinant protein) Antibody Production Protein Array

 Tel: 1-631-559-9269 1-516-512-3133

 Email: info@creative-biomart.com  Fax: 1-631-938-8127

 45-1 Ramsey Road, Shirley, NY 11967, USA

Notes	Best use within three months from the date of receipt of this protein.
Storage	Store at -80 centigrade. Aliquot to avoid repeated freezing and thawing.
Storage Buffer	50 mM Tris-HCl, 10 mM reduced Glutathione, pH=8.0 in the elution buffer.

GENE INFORMATION

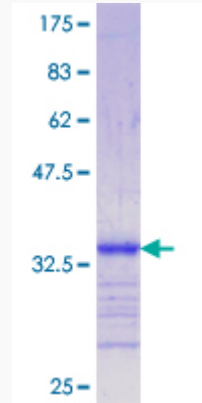
Gene Name	LRP5 low density lipoprotein receptor-related protein 5 [Homo sapiens]
Official Symbol	LRP5
Synonyms	LRP5; low density lipoprotein receptor-related protein 5; EVR1, exudative vitreoretinopathy 1 , LRP7, OPPG, osteoporosis pseudoglioma syndrome; low-density lipoprotein receptor-related protein 5; BMND1; HBM; LR3; OPS; LRP-5; low density lipoprotein receptor-related protein 7; EVR1; EVR4; LRP7; OPPG; OPTA1; VBCH2;
Gene ID	4041
mRNA Refseq	NM_002335
Protein Refseq	NP_002326
MIM	603506
UniProt ID	O75197

 Tel: 1-631-559-9269 1-516-512-3133

 Email: info@creative-biomart.com  Fax: 1-631-938-8127

 45-1 Ramsey Road, Shirley, NY 11967, USA

**Quality Control
Testing**



12.5% SDS-PAGE Stained with Coomassie Blue

 Tel: 1-631-559-9269 1-516-512-3133

 Email: info@creative-biomart.com  Fax: 1-631-938-8127

 45-1 Ramsey Road, Shirley, NY 11967, USA