

# Recombinant Human LRP5 Protein, Myc/DDK-tagged, C13 and N15-labeled

**Cat. No.** LRP5-5897H    **Lot. No.** (See product label)

## SPECIFICATION

### Product Overview

LRP5 MS Standard C13 and N15-labeled recombinant protein (NP\_002326) with a C-terminal MYC/DDK tag, was expressed in HEK293 cells.

### Species

Human

### Source

HEK293

### Description

This gene encodes a transmembrane low-density lipoprotein receptor that binds and internalizes ligands in the process of receptor-mediated endocytosis. This protein also acts as a co-receptor with Frizzled protein family members for transducing signals by Wnt proteins and was originally cloned on the basis of its association with type 1 diabetes mellitus in humans. This protein plays a key role in skeletal homeostasis and many bone density related diseases are caused by mutations in this gene. Mutations in this gene also cause familial exudative vitreoretinopathy. Alternative splicing results in multiple transcript variants.

### Molecular Mass

179 kDa

### AA Sequence

MEAAPPGPPWPLLLLLLLLLLALCGCPAPAAASPLLLFANRRDVRLVDAGGVKLESTIV  
VSGLEDAAAVDFQFSKGA VYWTDVSEEAIKQTYLNQTGA AVQNVVISGLVSPDGLA  
CDWVGKKLYWTDSETNRIEVANLNGTSRKVLFWQDLQPRAIALDPAHGMYWTD  
WGETPRIERAGMDGSTRKIIVDSDIYWPNGLTIDLEEQKLYWADAKLSFIHRANLDGS  
FRQKVVEGSLTHPFALTLSGDTLYWTDWQTRSIHACNKRTGGKRKEILSALYSPMDI

 Tel: 1-631-559-9269    1-516-512-3133

 Email: [info@creative-biomart.com](mailto:info@creative-biomart.com)     Fax: 1-631-938-8127

 45-1 Ramsey Road, Shirley, NY 11967, USA



QVLSQERQPPFFHTRCEEDNGGCSHLCLLSPSEPFYTCACPTGVQLQDNGRTCKAG  
 AEEVLLLARRTDLRRISLDTPDFTDIVLQVDDIRHAIIDYDPLEGYVYWTDDEVRAIR  
 RAYLDGSGAQTLVNTEINDPDGIAVDWVARNLYWTDGTDRIEVTRLNGTSRKILVS  
 EDLDEPRAIALHPVMGLMYWTDWGENPKIECANLDGQERRVLVNASLGPWNGLAL  
 DLQEGKLYWGDAKTDKIEVINVDGTKRRTLLEDKLPHFIFGFTLLGDFIYWTDWQRRSI  
 ERVHKVKASRDVIIDQLPDLMGLKAVNVAKVVGTPCADRNGGCSHLCPFFPHATR  
 CGCPIGLELLSDMKTCIVPEAFLVFTSRAAIHRISLETNNNDVAIPLTGVKEASALDFD  
 VSNNHIYWTDVSLKTISRAFMNGSSVEHVVEFGLDYPEGMAVDWMGKNLYWADTG  
 TNRIEVARLDGQFRQVLVWRDLNPRSLALDPTKGYIYWTEWGGKPRIVRAFMDGT  
 NCMTLVDKVGRANDLTIDYADQRLYWTDLDTNMIESSNMLGQERVVIADDLPHPFGL  
 LTQYSDYIYWTDWNLHSIERADKTSGRNRTLIQGHLDVMDILVFHSSRQDGLNDCM  
 HNNGQCGQLCLAIPIGGHRCGCASHYTLDPSSRNCSPPTTFLFSQKSAISRMIPDD  
 QHSPDLILPLHGLRNVKAIDYDPLDKFIYWVDGRQNIKRAKDDGTQPFVLTSLSQGQ  
 NPDRQPHDLSIDIYSRTLFWTCEATNTINVHRLSGEAMGVVLRGDRDKPRAIVVNAE  
 RGYLYFTNMQDRAAKIERAALDGTREVLFTTGLIRPVALVVDNTLGKLFWVDADLK  
 RIESCDLSGANRLTLEDANIVQPLGLTILGKHLWIDRQQQMIERVEKTTGDKRTRIQ  
 GRVAHLTGIHAVEEVSLEEFSAHPCARDNGGCSHICIAKGDGTPRCSCPVHLVLLQN  
 LLTCGEPPTCSPDQFACATGEIDCIPGAWRCDGFPECDDQSDEEGPCVCSAAQFP  
 CARGQCVDLRLRCDGEADCQDRSDEVDCDAICLPNQFRCASGQCVLKQQCDSFP  
 DCIDGSDELMCEITKPPSDDSPAHSASIGPVIGIILSLFVMGGVYFVCQRVVCQRYAG  
 ANGPFPHEYVSGTPHVPLNFIAPGGSQHGPFGTGIACGKSMSSVSLMGGRRGGVPL  
 YDRNHVTGASSSSSSSTKATLYPPILNPPSPATDPSLYNMDMFYSSNIPATARPYPYR  
 PYIIRGMAPPPTPCSTDVCDSDYSASRWKASKYYLDLNSDSDPYPPPPTPHSQYLSA  
 EDSCPPSPATERSYFHLFPPPPSPCTDSSTRTRPLEQKLISEEDLAANDILDYKDDDD  
 KV

**Purity** > 80% as determined by SDS-PAGE and Coomassie blue staining

**Stability** Stable for 3 months from receipt of products under proper storage and handling conditions.

Tel: 1-631-559-9269 1-516-512-3133

Email: [info@creative-biomart.com](mailto:info@creative-biomart.com) Fax: 1-631-938-8127

45-1 Ramsey Road, Shirley, NY 11967, USA

<b>Storage</b>	Store at -80 centigrade. Avoid repeated freeze-thaw cycles.
<b>Concentration</b>	50 µg/mL as determined by BCA
<b>Storage Buffer</b>	100 mM glycine, 25 mM Tris-HCl, pH 7.3.
<b>GENE INFORMATION</b>	
<b>Gene Name</b>	LRP5 low density lipoprotein receptor-related protein 5 [ Homo sapiens (human) ]
<b>Official Symbol</b>	LRP5
<b>Synonyms</b>	LRP5; low density lipoprotein receptor-related protein 5; EVR1, exudative vitreoretinopathy 1, LRP7, OPPG, osteoporosis pseudoglioma syndrome; low-density lipoprotein receptor-related protein 5; BMND1; HBM; LR3; OPS; LRP-5; low density lipoprotein receptor-related protein 7; EVR1; EVR4; LRP7; OPPG; OPTA1; VBCH2;
<b>Gene ID</b>	4041
<b>mRNA Refseq</b>	NM_002335
<b>Protein Refseq</b>	NP_002326
<b>MIM</b>	603506
<b>UniProt ID</b>	O75197

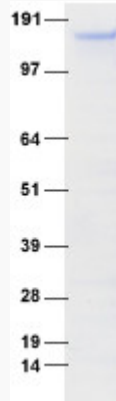
 Tel: 1-631-559-9269 1-516-512-3133

 Email: [info@creative-biomart.com](mailto:info@creative-biomart.com)  Fax: 1-631-938-8127

 45-1 Ramsey Road, Shirley, NY 11967, USA



**SDS-PAGE**



☎ Tel: 1-631-559-9269 1-516-512-3133

☎ Email: [info@creative-biomart.com](mailto:info@creative-biomart.com) ☎ Fax: 1-631-938-8127

☎ 45-1 Ramsey Road, Shirley, NY 11967, USA