

## Recombinant Human LRP6 Protein, MYC/DDK-tagged

Cat. No. LRP6-01H Lot. No. (See product label)

### SPECIFICATION

**Product Overview** Purified recombinant protein of Homo sapiens low density lipoprotein receptor-related protein 6 (LRP6) with a C-Myc/DDK tag was expressed in HEK293T.

**Species** Human

**Source** HEK293

**Description** This gene encodes a member of the low density lipoprotein (LDL) receptor gene family. LDL receptors are transmembrane cell surface proteins involved in receptor-mediated endocytosis of lipoprotein and protein ligands. The protein encoded by this gene functions as a receptor or, with Frizzled, a co-receptor for Wnt and thereby transmits the canonical Wnt/beta-catenin signaling cascade. Through its interaction with the Wnt/beta-catenin signaling cascade this gene plays a role in the regulation of cell differentiation, proliferation, and migration and the development of many cancer types. This protein undergoes gamma-secretase dependent RIP- (regulated intramembrane proteolysis) processing but the precise locations of the cleavage sites have not been determined.

**Molecular Mass** 178.4 kDa

**Purity** > 80% as determined by SDS-PAGE and Coomassie blue staining

**Stability** Stable for 12 months from the date of receipt of the product under proper storage and handling conditions. Avoid repeated freeze-thaw cycles.

 Tel: 1-631-559-9269 1-516-512-3133

 Email: [info@creative-biomart.com](mailto:info@creative-biomart.com)  Fax: 1-631-938-8127

 45-1 Ramsey Road, Shirley, NY 11967, USA

<b>Storage</b>	Store at -80 centigrade.
<b>Concentration</b>	>50 µg/mL as determined by microplate BCA method.
<b>Storage Buffer</b>	25 mM Tris.HCl, pH 7.3, 100 mM glycine, 10% glycerol.

## GENE INFORMATION

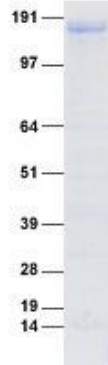
<b>Gene Name</b>	LRP6 LDL receptor related protein 6 [ Homo sapiens (human) ]
<b>Official Symbol</b>	LRP6
<b>Synonyms</b>	LRP6; LDL receptor related protein 6; ADCAD2; STHAG7; low-density lipoprotein receptor-related protein 6; LRP-6
<b>Gene ID</b>	4040
<b>mRNA Refseq</b>	NM_002336
<b>Protein Refseq</b>	NP_002327
<b>MIM</b>	603507
<b>UniProt ID</b>	O75581

 Tel: 1-631-559-9269 1-516-512-3133

 Email: [info@creative-biomart.com](mailto:info@creative-biomart.com)  Fax: 1-631-938-8127

 45-1 Ramsey Road, Shirley, NY 11967, USA

**SDS-PAGE**



Coomassie blue staining of purified LRP6 protein. The protein was produced from HEK293T cells transfected with LRP6 cDNA clone using MegaTran 2.0.

 Tel: 1-631-559-9269 1-516-512-3133

 Email: [info@creative-biomart.com](mailto:info@creative-biomart.com)  Fax: 1-631-938-8127

 45-1 Ramsey Road, Shirley, NY 11967, USA