

# Recombinant Human LRP6 protein, Mouse IgG Fc-tagged

**Cat. No.** LRP6-552H    **Lot. No.** (See product label)

## SPECIFICATION

<b>Product Overview</b>	Recombinant Human LRP6 (Ala20-Pro630) protein was fused to mouse IgG2a Fc tag at C-terminus and expressed in human 293 cells (HEK293).
<b>Species</b>	Human
<b>Source</b>	HEK293
<b>ProteinLength</b>	Ala20-Pro630
<b>Description</b>	LRP6 is a transmembrane low-density lipoprotein receptor that shares a similar structure with LRP5. Low-density lipoprotein receptor-related protein 6 is a key component of the LRP5/LRP6/Frizzled co-receptor group that is involved in canonical Wnt pathway. The Wnt-induced Fzd/LRP6 coreceptor complex recruits DVL1 polymers to the plasma membrane which, in turn, recruits the AXIN1/GSK3B-complex to the cell surface promoting the formation of signalsomes and inhibiting AXIN1/GSK3-mediated phosphorylation and destruction of beta-catenin.
<b>Predicted N Terminal</b>	Ala20
<b>Form</b>	Lyophilized from 0.22 µm filtered solution in Tris with Glycine, Arginine and NaCl, pH7.5, 10% trehalose.
<b>Molecular Mass</b>	The protein has a calculated MW of 95.8 kDa. The protein migrates as 55 kDa and 110 kDa under reducing (R) condition (SDS-PAGE) due to glycosylation.

 Tel: 1-631-559-9269    1-516-512-3133

 Email: [info@creative-biomart.com](mailto:info@creative-biomart.com)     Fax: 1-631-938-8127

 45-1 Ramsey Road, Shirley, NY 11967, USA

<b>Endotoxin</b>	Less than 0.1 EU per µg by the LAL method.
<b>Purity</b>	>90% as determined by SDS-PAGE.
<b>Storage</b>	<p>For long term storage, the product should be stored at lyophilized state at -20 centigrade or lower.</p> <p>Please avoid repeated freeze-thaw cycles.</p> <p>This product is stable after storage at:</p> <p>-20 to -70 centigrade for 12 months in lyophilized state;          -70 centigrade for 3 months under sterile conditions after reconstitution.</p>
<b>Reconstitution</b>	It is recommended that sterile water be added to the vial to prepare a stock solution of 0.2 ug/ul. Centrifuge the vial at 4°C before opening to recover the entire contents.

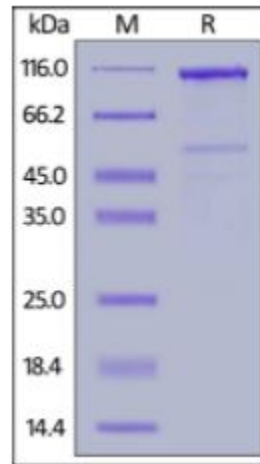
## GENE INFORMATION

<b>Gene Name</b>	LRP6
<b>Official Symbol</b>	LRP6
<b>Synonyms</b>	LRP6; low density lipoprotein receptor-related protein 6; low-density lipoprotein receptor-related protein 6; LRP-6; ADCAD2; FLJ90062; FLJ90421
<b>Gene ID</b>	4040
<b>mRNA Refseq</b>	NM_002336
<b>Protein Refseq</b>	NP_002327
<b>MIM</b>	603507

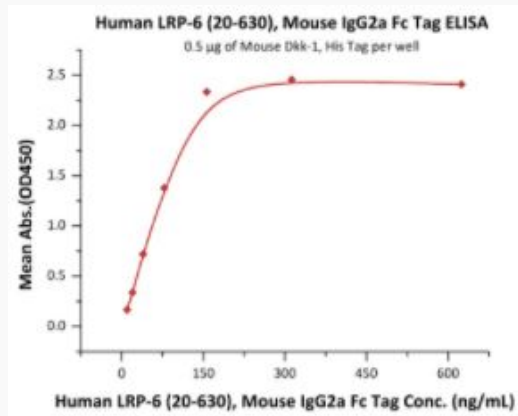
 Tel: 1-631-559-9269 1-516-512-3133

 Email: [info@creative-biomart.com](mailto:info@creative-biomart.com)  Fax: 1-631-938-8127

 45-1 Ramsey Road, Shirley, NY 11967, USA

**UniProt ID**
**O75581**
**SDS-PAGE of LRP6-552H**


Human LRP-6 (20-630), Mouse IgG2a Fc Tag on SDS-PAGE under reducing (R) condition. The gel was stained overnight with Coomassie Blue. The purity of the protein is greater than 90%.

**Bioactivity-ELISA of LRP6-552H**


Immobilized Mouse Dkk-1, His Tag at 5 µg/mL (100 µL/well) can bind Human LRP-

Tel: 1-631-559-9269 1-516-512-3133

Email: [info@creative-biomart.com](mailto:info@creative-biomart.com) Fax: 1-631-938-8127

45-1 Ramsey Road, Shirley, NY 11967, USA



6 (20-630), Mouse IgG2a Fc Tag with a linear range of 10-78 ng/mL (QC tested).

 Tel: 1-631-559-9269 1-516-512-3133

 Email: [info@creative-biomart.com](mailto:info@creative-biomart.com)  Fax: 1-631-938-8127

 45-1 Ramsey Road, Shirley, NY 11967, USA