

Recombinant Full Length Human LRP6 Protein, C-Flag-tagged

Cat. No. LRP6-731HFL Lot. No. (See product label)

SPECIFICATION

Product Overview	Recombinant Full Length Human LRP6 Protein, fused to Flag-tag at C-terminus, was expressed in Mammalian cells.
Species	Human
Source	Mammalian Cells
Description	This gene encodes a member of the low density lipoprotein (LDL) receptor gene family. LDL receptors are transmembrane cell surface proteins involved in receptor-mediated endocytosis of lipoprotein and protein ligands. The protein encoded by this gene functions as a receptor or, with Frizzled, a co-receptor for Wnt and thereby transmits the canonical Wnt/beta-catenin signaling cascade. Through its interaction with the Wnt/beta-catenin signaling cascade this gene plays a role in the regulation of cell differentiation, proliferation, and migration and the development of many cancer types. This protein undergoes gamma-secretase dependent RIP- (regulated intramembrane proteolysis) processing but the precise locations of the cleavage sites have not been determined.
Form	25 mM Tris HCl, pH 7.3, 100 mM glycine, 10% glycerol.
Molecular Mass	178.4 kDa
AA Sequence	MGAVLRSLACSFVLLRAAPLLLYANRRDLRLVDATNGKENATIVVGGLEDAAAVD FVFSHGLIYWSDV SEEAIKRTEFNKTESVQNVVVVSGLLSPDGLACDWLGEKLYWTD SETNRIEVSNLDGSLRKVLFWQELDQP RAIALDPSSGFMYWTDWGEVPKIERAGM

 Tel: 1-631-559-9269 1-516-512-3133

 Email: info@creative-biomart.com  Fax: 1-631-938-8127

 45-1 Ramsey Road, Shirley, NY 11967, USA

DGSSRFIIINSEIYWPNGLTLDYEEQKLYWADAKLNFIHKSNDLGTNRQAVVKGSLP
HPFALTLFEDILYWTDWSTHSILACNKYTGEGLREIHSDFSPMDIHAFSQQRQP NAT
NPCGIDNNGGCSHLCLMSPVKPFYQCACPTGVKLENGKTCKDGATELLLLARRTDL
RRISLDTDPFT DIVLQLEDIRHAIIDYDPVEGYIYWTDDEVRAIRRSFIDGSGSQFVV
TAQIAHPDGIADVWVARNLYWT DTGTDRIEVTRLNGTMRKILISEDLEEPRAIVLDPM
VGYMYWTDWGEIPKIERAALDGSDRVVLVNTSLG WPNGLALDYDEGKIYWGDAKT
DKIEVMNTDGTGRRVLVEDKIPHIFGFTLLGDYVYWTDWQRRSIEVHK RSAEREVI
IDQLPDLMLKATNVHRVIGSNPCAENGCSHLCLYRPQGLRCACPIGFELISDMK
TCIVP EAFLLFSRRADIRRISLETNNNNVAIPLTGVKEASALDFDVTDNRIYWTDISLK
TISRAFMNGSALEHVV EFGLDYPEGMAVDWLGKNLYWADTGTNRIEVSKLDGQHR
QVLVWKDLDSPRALALDPAEGFMYWTEWGGK PKIDRAAMDGSERTTLVPNVGRA
NGLTIDYAKRRLYWTDLDTNLISSNMLGLNREVIADDLPHPFGLTQ YQDIYIYWTDW
SRRSIERANKTSGQNRTIIQGHLDYVMDILVFHSSRQSGWNECASSNGHCSSLCLA
VPVG GFVCGCPAHYSLNADNRTCSAPTTFLFSQKSAINRMVIDEQQSPDIILPIHSL
RNVRAIDYDPLDKQLY WIDSRQNMIRKAQEDGSQGFTVVVSSVPSQNLEIQPYDLSI
DIYSRYIYWTCEATNVINVTRLDGRSVGV VLKGEQDRPRAIVVNPEKGYMYFTNLQE
RSPKIERAALDGTREVLFFSGLSKPIALALDSRLGKLFWAD SDLRRIESSDLSGANR
IVLEDSNILQPVGLTVFENWLYWIDKQQQMIEKIDMTGREGRTKVQARIAQLSD IHAV
KELNLQEYRQHPCAQDNGGCSHICLVKGDGTRCSCPMHLVLLQDELSCGEPPTC
SPQQFTCFTE IDCIPVAWRCDGFTECEDHSDELNCPVCSESQFQCASGQCIDGAL
RCNGDANCQDKSDEKNCEVLCLIDQ FRCANGQCIGKHKKCDHNVDKSDKDELDC
YPTTEPAPQATNTVGSVIGVIVTIFVSGTVYFICQRMLCP RMKGDGETMTNDYVVHG
PASVPLGYVPHPSLSGSLPGMSRGKSMISSLSIMGGSSGPPYDRAHVTGASS SSS
SSTKGTYPAILNPPSPATERSHYTMEFGYSSNSPSTHRYSYRPPYSYRHFAPPTT
PCSTDVCDSD YAPSRMTSVATAKGYTSDLNYDSEVPPPPTPRSQYLSAEENYE
SCPPSPYTERSYSHHLYPPPPSPCT
DSSRTRPLEQKLISEEDLAANDILDYKDDDDKV

Purity

> 80% as determined by SDS-PAGE and Coomassie blue staining.

 Tel: 1-631-559-9269 1-516-512-3133 Email: info@creative-biomart.com  Fax: 1-631-938-8127 45-1 Ramsey Road, Shirley, NY 11967, USA

Stability	Stable for 12 months from the date of receipt of the product under proper storage and handling conditions. Avoid repeated freeze-thaw cycles.
Storage	Store at -80 centigrade.
Concentration	>50 ug/mL as determined by microplate BCA method.
Preparation	Recombinant protein was captured through anti-DDK affinity column followed by conventional chromatography steps.
Protein Families	Druggable Genome, Transmembrane
Protein Pathways	Wnt signaling pathway
Full Length	Full L.

GENE INFORMATION

Gene Name	LRP6 LDL receptor related protein 6 [Homo sapiens (human)]
Official Symbol	LRP6
Synonyms	ADCAD2; STHAG7
Gene ID	4040
mRNA Refseq	NM_002336.3
Protein Refseq	NP_002327.2
MIM	603507

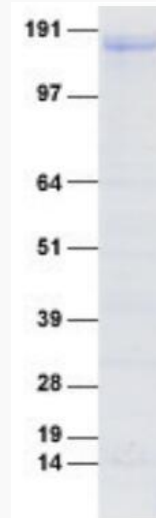
 Tel: 1-631-559-9269 1-516-512-3133

 Email: info@creative-biomart.com  Fax: 1-631-938-8127

 45-1 Ramsey Road, Shirley, NY 11967, USA

UniProt ID

O75581



Coomassie blue staining of purified LRP6 protein.

 Tel: 1-631-559-9269 1-516-512-3133

 Email: info@creative-biomart.com  Fax: 1-631-938-8127

 45-1 Ramsey Road, Shirley, NY 11967, USA