

Recombinant Human LRP6 Protein, N-His tagged, Avi-biotinylated

Cat. No. LRP6-7875HB **Lot. No.** (See product label)

SPECIFICATION

Product Overview	Recombinant Human LRP6 Protein with N-His tag and Avi-biotin was expressed in E. coli.
Species	Human
Source	E.coli
Description	This gene encodes a member of the low density lipoprotein (LDL) receptor gene family. LDL receptors are transmembrane cell surface proteins involved in receptor-mediated endocytosis of lipoprotein and protein ligands. The protein encoded by this gene functions as a receptor or, with Frizzled, a co-receptor for Wnt and thereby transmits the canonical Wnt/beta-catenin signaling cascade. Through its interaction with the Wnt/beta-catenin signaling cascade this gene plays a role in the regulation of cell differentiation, proliferation, and migration and the development of many cancer types. This protein undergoes gamma-secretase dependent RIP- (regulated intramembrane proteolysis) processing but the precise locations of the cleavage sites have not been determined.
Form	Lyophilized
Molecular Mass	32.2 kDa
AA Sequence	MGSSHHHHHGLNDIFEAQKIEWHESSGLVPRGSHMASMTGGQQMGRGSEFWID SRQNMIRKAQEDGSQGFTVVVSSVPSQNLEIQPYDLSIDIYSRYIYWTCBATNVINVT

 Tel: 1-631-559-9269 1-516-512-3133

 Email: info@creative-biomart.com  Fax: 1-631-938-8127

 45-1 Ramsey Road, Shirley, NY 11967, USA

RLDGRSVGVVLKGEQDRPRAVVVNPEKGYMYFTNLQERSPKIERAALDGTEREVLF
 FSGLSKPIALALDSRLGKLFWADSDLRRIESSDLSGANRIVLEDSNILQPVGTLVFEN
 WLYWIDKQQQMIEKIDMTGREGRTKVQARIAQLSDIHAVKELNLQEYRQHPCAQDN
 GG

Endotoxin <1 EU/μg by LAL

Purity > 90% by SDS-PAGE

Storage Store it under sterile conditions at -20 to -80 centigrade. It is recommended that the protein be aliquoted for optimal storage. Avoid repeated freeze-thaw cycles.

Storage Buffer Lyophilized from PBS, pH 7.4, 5% trehalose, 5% mannitol

Conjugation Biotin

GENE INFORMATION

Gene Name [LRP6 LDL receptor related protein 6 \[Homo sapiens \(human\) \]](#)

Official Symbol [LRP6](#)

Synonyms LRP6; LDL receptor related protein 6; ADCAD2; STHAG7; low-density lipoprotein receptor-related protein 6; LRP-6

Gene ID [4040](#)

mRNA Refseq [NM_002336](#)

Protein Refseq [NP_002327](#)

 Tel: 1-631-559-9269 1-516-512-3133

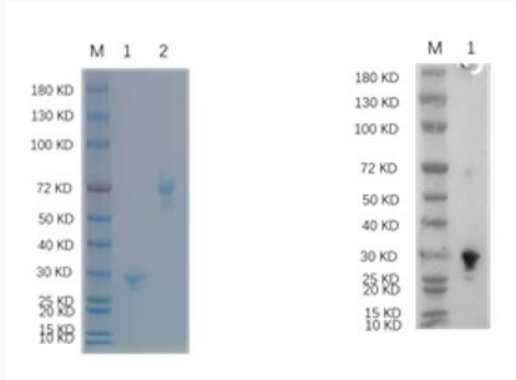
 Email: info@creative-biomart.com  Fax: 1-631-938-8127

 45-1 Ramsey Road, Shirley, NY 11967, USA

MIM 603507

UniProt ID O75581

**Reducing 12% SDS-
PAGE and WB
analysis profile of
purified LRP6**



1. LRP6
2. BSA

 Tel: 1-631-559-9269 1-516-512-3133

 Email: info@creative-biomart.com  Fax: 1-631-938-8127

 45-1 Ramsey Road, Shirley, NY 11967, USA