

Recombinant Human LRP8 Protein, MYC/DDK-tagged, C13 and N15-labeled

Cat. No. LRP8-022H **Lot. No.** (See product label)

SPECIFICATION

Product Overview	LRP8 MS Standard C13 and N15-labeled recombinant protein (NP_059992) with a C-terminal MYC/DDK tag, was expressed in HEK293 cells.
Species	Human
Source	HEK293
Description	This gene encodes a member of the low density lipoprotein receptor (LDLR) family. Low density lipoprotein receptors are cell surface proteins that play roles in both signal transduction and receptor-mediated endocytosis of specific ligands for lysosomal degradation. The encoded protein plays a critical role in the migration of neurons during development by mediating Reelin signaling, and also functions as a receptor for the cholesterol transport protein apolipoprotein E. Expression of this gene may be a marker for major depressive disorder. Alternatively spliced transcript variants encoding multiple isoforms have been observed for this gene.
Molecular Mass	78.3 kDa
AA Sequence	MGLPEPGPLRLLALLLLLLLLLLLQLQHLAAAADPLLGGQGPAKDCEKDQFQCRNE RCIPSVWRCDEDDDDCLDHSDEDDCPKKTCADSDFTCDNGHCIHERWKCDGEEEC DGSDESEATCTKQVCPAEKLSGPTSHKCVPASWRCDGEKDCEGGADEAGCATS LGTCRGDEFQCGDGTCLVLAIKHCNQEQDCPDGSDEAGCLQGLNECLHNNGGCSHI CTDLKIGFECTCPAGFQLLDQKTCGDIDECKDPDACSQICVNYKGYFKCECYPGYE

 Tel: 1-631-559-9269 1-516-512-3133

 Email: info@creative-biomart.com  Fax: 1-631-938-8127

 45-1 Ramsey Road, Shirley, NY 11967, USA

MDLLTKNCKAAAGKSPSLIFTNRHEVRRIDLVKRNYSRLIPMLKNVVALDVEVATNRI
 YWCDLSYRKIYSAYMDKASDPKEQEVLIDEQLHSPEGLAVDWWHKHIYWTDSGNKTI
 SVATVDGGRRRTLFSRNLSEPRRAIAMDPLRGFMWSDWGDQAKIEKSGLNQVDRQ
 TLVSDNIEWPNGITLDLLSQRLYWVDSKHLQLSSIDFSGGNRKTLLISSTDFLSHPFGIA
 VFEDKVFWTDLENEAIFSANRLNGLEISILAENLNNPHDIVIFHELKQPRAPDACELSV
 QPNGGCEYLCLPAPQISSHSPKYTCACPDTMWLGPDMKRCYRDANEDSKMGSTVT
 AAVIGIIVPIVVIALLCMSGYLIWRNWKRKNTKSMNFDNPVYRKTTEEEDEDELHIGRT
 AQIGHVYPARVALSLEDDGLPTRTRPLEQKLISEEDLAANDILDYKDDDDKV

Purity > 80% as determined by SDS-PAGE and Coomassie blue staining

Stability Stable for 3 months from receipt of products under proper storage and handling conditions.

Storage Store at -80 centigrade. Avoid repeated freeze-thaw cycles.

Concentration 50 µg/mL as determined by BCA

Storage Buffer 100 mM glycine, 25 mM Tris-HCl, pH 7.3.

GENE INFORMATION

Gene Name LRP8 LDL receptor related protein 8 [Homo sapiens (human)]

Official Symbol LRP8

Synonyms LRP8; LDL receptor related protein 8; APOER2; HSZ75190; LRP-8; MC11; low-density lipoprotein receptor-related protein 8; ApoE receptor 2; low density lipoprotein receptor-related protein 8, apolipoprotein e receptor

Gene ID 7804

 Tel: 1-631-559-9269 1-516-512-3133

 Email: info@creative-biomart.com  Fax: 1-631-938-8127

 45-1 Ramsey Road, Shirley, NY 11967, USA

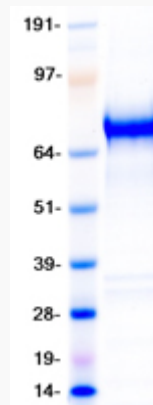
mRNA Refseq [NM_017522](#)

Protein Refseq [NP_059992](#)

MIM [602600](#)

UniProt ID [Q14114](#)

SDS-PAGE



 Tel: 1-631-559-9269 1-516-512-3133

 Email: info@creative-biomart.com  Fax: 1-631-938-8127

 45-1 Ramsey Road, Shirley, NY 11967, USA