

## Recombinant Human LRP8 Protein, GST-tagged

Cat. No. LRP8-4688H    Lot. No. (See product label)

### SPECIFICATION

<b>Product Overview</b>	Human LRP8 partial ORF ( NP_004622, 83 a.a. - 170 a.a.) recombinant protein with GST-tag at N-terminal.
<b>Species</b>	Human
<b>Source</b>	Wheat Germ
<b>Description</b>	This gene encodes an apolipoprotein E receptor, a member of the low density lipoprotein receptor (LDLR) family. Apolipoprotein E is a small lipophilic plasma protein and a component of lipoproteins such as chylomicron remnants, very low density lipoprotein (VLDL), and high density lipoprotein (HDL). The apolipoprotein E receptor is involved in cellular recognition and internalization of these lipoproteins. Alternative splicing generates multiple transcript variants encoding distinct isoforms for this gene. [provided by RefSeq
<b>Molecular Mass</b>	35.42 kDa
<b>AA Sequence</b>	KKTCADSDFTCDNGHCIHERWKCDGEEPCPDGSESEATCTKQVCPAEKLSCGPT SHKCVPASWRCDGEKDCGGADEAGCATLCAPH
<b>Applications</b>	Enzyme-linked Immunoabsorbent Assay Western Blot (Recombinant protein) Antibody Production Protein Array

 Tel: 1-631-559-9269    1-516-512-3133

 Email: [info@creative-biomart.com](mailto:info@creative-biomart.com)     Fax: 1-631-938-8127

 45-1 Ramsey Road, Shirley, NY 11967, USA

<b>Notes</b>	Best use within three months from the date of receipt of this protein.
<b>Storage</b>	Store at -80 centigrade. Aliquot to avoid repeated freezing and thawing.
<b>Storage Buffer</b>	50 mM Tris-HCl, 10 mM reduced Glutathione, pH=8.0 in the elution buffer.

## GENE INFORMATION

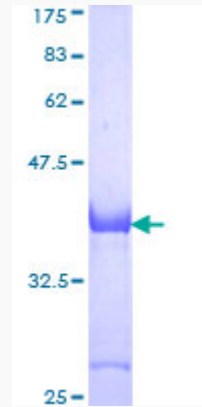
<b>Gene Name</b>	LRP8 low density lipoprotein receptor-related protein 8, apolipoprotein e receptor [ Homo sapiens ]
<b>Official Symbol</b>	LRP8
<b>Synonyms</b>	LRP8; low density lipoprotein receptor-related protein 8, apolipoprotein e receptor; low-density lipoprotein receptor-related protein 8; APOER2; ApoE receptor 2; MCI1; LRP-8; HSZ75190;
<b>Gene ID</b>	7804
<b>mRNA Refseq</b>	NM_001018054
<b>Protein Refseq</b>	NP_001018064
<b>MIM</b>	602600
<b>UniProt ID</b>	Q14114

 Tel: 1-631-559-9269 1-516-512-3133

 Email: [info@creative-biomart.com](mailto:info@creative-biomart.com)  Fax: 1-631-938-8127

 45-1 Ramsey Road, Shirley, NY 11967, USA

**Quality Control  
Testing**



12.5% SDS-PAGE Stained with Coomassie Blue

 Tel: 1-631-559-9269 1-516-512-3133

 Email: [info@creative-biomart.com](mailto:info@creative-biomart.com)  Fax: 1-631-938-8127

 45-1 Ramsey Road, Shirley, NY 11967, USA