

Recombinant Human LRPAP1 Protein

Cat. No. LRPAP1-01H Lot. No. (See product label)

SPECIFICATION

Product Overview	Recombinant Human LRPAP1 Protein without tag was expressed in HEK293.
Species	Human
Source	HEK293
ProteinLength	1-357 aa
Description	This gene encodes a protein that interacts with the low density lipoprotein (LDL) receptor-related protein and facilitates its proper folding and localization by preventing the binding of ligands. Mutations in this gene have been identified in individuals with myopia 23. Alternative splicing results in multiple transcript variants.
Molecular Mass	73 kDa
AA Sequence	<pre> MAPRRVRSFLRGLPALLLLLLFLGPWPAASHGGKYSREKNQPKPSPKRESGEEFRM EKLNQLWEKAQRLHLPVRLAELHADLKIQRDELAWKKLKLDGLDEEDGEKEARLIR NLNVILAKYGLDGKKDARQVTSNSLSGTQEDGLDDPRLEKLWHKAKTSGKFSGEEL DKLWREFLHHKEKVHEYNVLLLETLSRTEEIHENVISPSDLSDIKGSVLHSRHTELKEK LRSINQGLDRLRRVSHQGYSTAEFEPRVIDLWDLAQSANLTDKELEAFREELKHF EAKIEKHNYQKQLEIAHEKLRHAESVGDGERVSRREKHALLEGRTKELGYTVKKH LQDLSGRISRARHNELTGGSGGNSAPLERKSSVECPPCPAPPVAGPSVFLFPPKPK DTLMISRTPEVTCVVVDVSHEDPEVQFNWYVDGVEVHNAKTKPREEQFNSTFRVVS VLTVVHQDWLNGKEYKCKVSNKGLPAPIEKTISKTKGQPREPQVYTLPPSREEMTK NQVSLTCLVKGFYPSDIAVEWESNGQPENNYKTPPMLDSDGSFFLYSKLTVDKSR </pre>

 Tel: 1-631-559-9269 1-516-512-3133

 Email: info@creative-biomart.com  Fax: 1-631-938-8127

 45-1 Ramsey Road, Shirley, NY 11967, USA

WQQGNVFSCSVMHEALHNHYTQKSLSLSPGARTGGGGSGGGGSSTRKQNYMMN
FSRQHGLRRFYNNRRRSLRRYP

Endotoxin < 1 EU/μg by LAL.

Purity > 90 % by SDS-PAGE

Storage Store it under sterile conditions at -20 to -80 centigrade. It is recommended that the protein be aliquoted for optimal storage. Avoid repeated freeze-thaw cycles.

Storage Buffer Sterile PBS, pH7.4

Concentration 1.75 mg/mL by BCA

GENE INFORMATION

Gene Name [LRPAP1 LDL receptor related protein associated protein 1 \[Homo sapiens \(human\) \]](#)

Official Symbol [LRPAP1](#)

Synonyms LRPAP1; LDL receptor related protein associated protein 1; RAP; MRAP; A2RAP; HBP44; MYP23; A2MRAP; alpha-2-MRAP; alpha-2-macroglobulin receptor-associated protein; 39 kDa receptor-associated protein; low density lipoprotein receptor-related protein associated protein 1; low density lipoprotein-related protein-associated protein 1 (alpha-2-macroglobulin receptor-associated protein 1)

Gene ID [4043](#)

mRNA Refseq [NM_002337](#)

Protein Refseq [NP_002328](#)

 Tel: 1-631-559-9269 1-516-512-3133

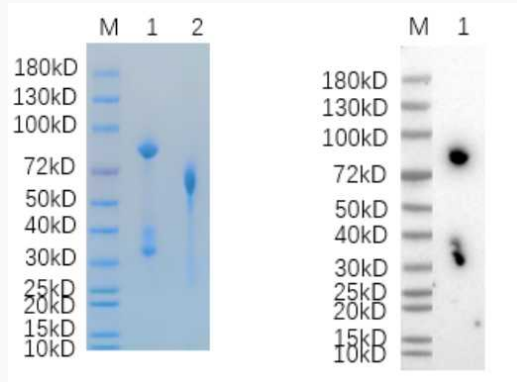
 Email: info@creative-biomart.com  Fax: 1-631-938-8127

 45-1 Ramsey Road, Shirley, NY 11967, USA

MIM 104225

UniProt ID P30533

Reducing 12 % SDS-PAGE (CBB stained) and WB (Goat Anti-Human IgG/HRP antibody) analysis profiles of purified LRPAP1.



1. LRPAP1
2. BSA

 Tel: 1-631-559-9269 1-516-512-3133

 Email: info@creative-biomart.com  Fax: 1-631-938-8127

 45-1 Ramsey Road, Shirley, NY 11967, USA