

Recombinant Human LRPAP1 Protein (Tyr35-Leu357), N-His tagged

Cat. No. LRPAP1-4460H Lot. No. (See product label)

SPECIFICATION

Product Overview	Recombinant human LRPAP1 (Tyr35-Leu357) fused with the N-His tag was expressed in E. coli.
Species	Human
Source	E.coli
ProteinLength	Tyr35-Leu357
Form	Lyophilized powder/frozen liquid
Molecular Mass	40.08 kDa
Purity	>90% as determined by SDS-PAGE.
Notes	For research use only.
Storage	Use a manual defrost freezer and avoid repeated freeze thaw cycles. Store at 2 to 8 centigrade for one week. Store at -20 to -80 centigrade for twelve months from the date of receipt.
Storage Buffer	0.01M PBS, pH 7.4, 0.02% NLS
Reconstitution	Reconstitute in sterile water for a stock solution.

 Tel: 1-631-559-9269 1-516-512-3133

 Email: info@creative-biomart.com  Fax: 1-631-938-8127

 45-1 Ramsey Road, Shirley, NY 11967, USA

Shipping They are shipped out with dry ice/blue ice unless customers require otherwise.

GENE INFORMATION

Gene Name [LRPAP1 low density lipoprotein receptor-related protein associated protein 1 \[Homo sapiens \(human\) \]](#)

Official Symbol [LRPAP1](#)

Synonyms LRPAP1; low density lipoprotein receptor-related protein associated protein 1; A2MRAP, low density lipoprotein related protein associated protein 1 (alpha 2 macroglobulin receptor associated protein 1); alpha-2-macroglobulin receptor-associated protein; HBP44; alpha-2-MRAP; lipoprotein receptor associated protein; alpha-2-macroglobulin receptor-associated protein 1; low density lipoprotein receptor-related protein-associated protein 1; low density lipoprotein-related protein-associated protein 1 (alpha-2-macroglobulin receptor-associated protein 1); RAP; MRAP; A2RAP; A2MRAP; MGC138272;

Gene ID [4043](#)

mRNA Refseq [NM_002337](#)

Protein Refseq [NP_002328](#)

MIM [104225](#)

UniProt ID [P30533](#)

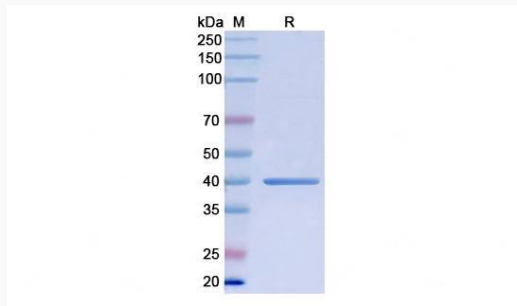
 Tel: 1-631-559-9269 1-516-512-3133

 Email: info@creative-biomart.com  Fax: 1-631-938-8127

 45-1 Ramsey Road, Shirley, NY 11967, USA



SDS-PAGE



Tel: 1-631-559-9269 1-516-512-3133

Email: info@creative-biomart.com Fax: 1-631-938-8127

45-1 Ramsey Road, Shirley, NY 11967, USA