

Recombinant Full Length Human LRPPRC Protein, C-Flag-tagged

Cat. No. LRPPRC-1879HFL Lot. No. (See product label)

SPECIFICATION

Product Overview	Recombinant Full Length Human LRPPRC Protein, fused to Flag-tag at C-terminus, was expressed in Mammalian cells.
Species	Human
Source	Mammalian Cells
Description	This gene encodes a leucine-rich protein that has multiple pentatricopeptide repeats (PPR). The precise role of this protein is unknown but studies suggest it may play a role in cytoskeletal organization, vesicular transport, or in transcriptional regulation of both nuclear and mitochondrial genes. The protein localizes primarily to mitochondria and is predicted to have an N-terminal mitochondrial targeting sequence. Mutations in this gene are associated with the French-Canadian type of Leigh syndrome.
Form	25 mM Tris HCl, pH 7.3, 100 mM glycine, 10% glycerol.
Molecular Mass	157.7 kDa
AA Sequence	MAALLRSARWLLRAGAAPRLPLSLRLLPGGPGRLLHAASYLPAARAGPVAGGLLSPARLYAIAAKEKDIQE ESTFSSRKISNQFDWALMRLDLSVRRTGRIPKLLQKVFNDTC RSGGLGGSHALLLRSCGSLLPELKLE ERTEFAHRIWDTLQKLGAVYDVSHYNALLK VYLQNEYKFSPTDFLAKMEEANIQPNRVTYQRLIASYCNV GDIEGASKILGFMKTKD LPVTEAVFSALVTGHARAGDMENAENILTVMRDAGIEPGPDTYLALLNAYA EK GDID HVKQTLEKVEKSELHLMRDRLQIIFSFSKAGYPQYVSEILEKVT CERRYIPDAMNLIL

 Tel: 1-631-559-9269 1-516-512-3133

 Email: info@creative-biomart.com  Fax: 1-631-938-8127

 45-1 Ramsey Road, Shirley, NY 11967, USA

LLVTEKL EDVALQILLACPVSKEDGPSVFGSFFLQHCVTMNTPVKELTDYCKKLKEV
 QMHSFPLQFTLHCALLANKT DLAKALMKAVKEEGFPIRPHYFWPLLVGRRKEKNVQ
 GIIEILKGMQELGVHPDQETYTDYVIPCFDSVNS ARAILQENGCLSDSDMFSQAGLR
 SEAANGNLDVLSFLKSNTLPISLQSSIRSSLLLGFRRSMNINLWSEI TELLYKDGRYC
 QEPRGPTEAVGYFLYNLIDSMDSSEVQAKEEHLRQYFHQLEKMNVKIPENIYRGIRN
 LL ESYHVPelikDAHLLVESKNLDFQKTVQLTSSELESTLETLKAENQPIRDVLKQLIL
 VLCSEENMQKALE LKAKYESDMVTGGYAALINLCCRHDKVEDALNLKEEFDRLDSS
 AVLDTGKYVGLVRVLAKHGKLDQAINI LKEMKEKDVLIKDTTALSFFHMLNGAALRG
 EIETVKQLHEAIVTLGLAEPSTNISFPLVTVHLEKGLDST ALEVAIDCYEKYKVLPRIHD
 VLCKLVEKGETDLIQKAMDFVSQEQGEMVMLYDLFFAFLQTGNYEAKKI IETPGIR
 ARSARLQWFCDRCVANNQVETLEKLVELTQKLFECDRDQMYYNLLKLYKINGDWQ
 RADAVWNK IQEENVIPREKTLRLLAEILREGNQEVFPDVPPELWYEDEKHSLNSSSSAS
 TTEPDFQKDILIAERLNQKKG AYDIFLNAKEQNIVFNAETYSNLIKLLMSEDYFTQAM
 EVKAFETHIKGFTLNDAAANSRLITQVRRDYL KEAVTTLKTVLDQQQTPSRLAVTRVI
 QALAMKGDVENIEVVQMLNGLED SIGLSKMVFINNIALAQIKN NNIDAAIENIENMLT
 SENKVIEPQYFGLAYLFRKVIEEQLEPAVEKISIMAERLANQFAIYKPVTDFFLQ LVDA
 GKVDDARALLQRCGAIAEQTPILLFLLRNSRKQGKASTVKSVLELIPELNEKEEAYN
 SLMKSYVS EKDVTSKALYEHILTAKNTKLDLFLKRYASLLKYAGEPVPPIEPPESEFE
 FYAQQRLRKLRENS TRTRPLEQKLISEEDLAANDILDYKDDDDKV

Purity	> 80% as determined by SDS-PAGE and Coomassie blue staining.
Stability	Stable for 12 months from the date of receipt of the product under proper storage and handling conditions. Avoid repeated freeze-thaw cycles.
Storage	Store at -80 centigrade.
Concentration	>50 ug/mL as determined by microplate BCA method.
Preparation	Recombinant protein was captured through anti-DDK affinity column followed by

conventional chromatography steps.

Full Length Full L.

GENE INFORMATION

Gene Name LRPPRC leucine rich pentatricopeptide repeat containing [Homo sapiens (human)]

Official Symbol LRPPRC

Synonyms LSFC; GP130; LRP130; MC4DN5; CLONE-23970

Gene ID 10128

mRNA Refseq NM_133259.4

Protein Refseq NP_573566.2

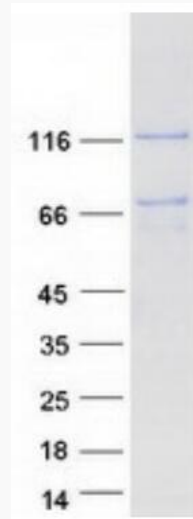
MIM 607544

UniProt ID P42704

 Tel: 1-631-559-9269 1-516-512-3133

 Email: info@creative-biomart.com  Fax: 1-631-938-8127

 45-1 Ramsey Road, Shirley, NY 11967, USA



Coomassie blue staining of purified LRPPRC protein.

 Tel: 1-631-559-9269 1-516-512-3133

 Email: info@creative-biomart.com  Fax: 1-631-938-8127

 45-1 Ramsey Road, Shirley, NY 11967, USA