

Recombinant Human LRPPRC Protein, Myc/DDK-tagged, C13 and N15-labeled

Cat. No. LRPPRC-804H Lot. No. (See product label)

SPECIFICATION

Product Overview	LRPPRC MS Standard C13 and N15-labeled recombinant protein (NP_573566) with a C-terminal MYC/DDK tag, was expressed in HEK293 cells.
Species	Human
Source	HEK293
Description	This gene encodes a leucine-rich protein that has multiple pentatricopeptide repeats (PPR). The precise role of this protein is unknown but studies suggest it may play a role in cytoskeletal organization, vesicular transport, or in transcriptional regulation of both nuclear and mitochondrial genes. The protein localizes primarily to mitochondria and is predicted to have an N-terminal mitochondrial targeting sequence. Mutations in this gene are associated with the French-Canadian type of Leigh syndrome.
Molecular Mass	157.7 kDa
AA Sequence	<p>MAALLRSARWLLRAGAAPRLPLSLRLLPGGPGRLLHAASYLPAARAGPVAGGLLSPA RLYAIAAKEKDIQEESTFSSRKISNQFDWALMRLDLSVRRTGRIPKLLQKVFNDTCR SGGLGGSHALLLRSCGSLLELKLEERTEFAHRIWDTLQKLGAVYDVSHYNALLKV YLQNEYKFSPTDFLAKMEEANIQPNRVTYQRLIASYCNAVGDIEGASKILGFMKTKDLP VTEAVFSALVTGHARAGDMENAENILTVMRDAGIEPGPDTYLALLNAYA EKGDIDHV KQTLEKVEKSELHLMRDLLQIIFFSKAGYPQYVSEILEKVT CERRYIPDAMNLILLLV TEKLEDVALQILLACPVSKEDGPSVFGSFFLQHCVTMNTPVEKLT DYCKKLKEVQMH</p>

 Tel: 1-631-559-9269 1-516-512-3133

 Email: info@creative-biomart.com  Fax: 1-631-938-8127

 45-1 Ramsey Road, Shirley, NY 11967, USA

SFPLQFTLHCALLANKTDLAKALMKAVKEEGFPIRPHYFWPLLVGRRKEKNVQGIIIL
 KGMQELGVHPDQETYTDYVIPCFDSVNSARAILQENGCLSDSDMFSQAGLRSEAAAN
 GNLDVLSFLKSNTLPISLQSIRSSLLLGFRSMNINLWSEITELLYKDGRYCQEPRG
 PTEAVGYFLYNLIDSMDSSEVQAKEEHLRQYFHQLEKMNVKIPENIYRGIRNLESYH
 VPELIKDAHLLVESKNLDFQKTVQLTSSELESTLETLKAENQPIRDVLKQLILVLCSEE
 NMQKALELKAKYESDMVTGGYAALINLCCRHDKVEDALNLKEEFDRLDSSAVLDTG
 KYVGLVRVLAKHGKLDQAINILKEMKEKDVLIKDTTALSFFHMLNGAALRGEIETVKQL
 HEAVTLGLAEPSTNISFPLVTVHLEKGDLEVAIDCYEKYKVLPRIHDVLCCLVEK
 GETDLIQKAMDFVSQEQGEMVMYLDLFFAFLQTGNYKEAKKIIETPGIRARSARLQW
 FCDRCVANNQVETLEKLVELTQKLFECDRDQMYYNLLKLYKINGDWQRADAVWNKI
 QEENVIPREKTLRLLAEILREGNQEVFPDVPPELWYEDEKHSLNSSSASTTEPDFQKDI
 LIACRLNQKKGAYDIFLNAKEQNIVFNAETYSNLIKLLMSEDYFTQAMEVKAFETHIK
 GFTLNDAAANSRLIITQVRRDYLKEAVTTLKTVLDQQQTPSRLAVTRVIQALAMKGDVE
 NIEVVQKMLNGLEDISIGLSKMFVFINNIALAQIKNNNIDAAIENIENMLTSENKVIQYF
 GLAYLFRKVIEEQLEPAVEKISIMAERLANQFAIYKPVTDFFLQLVDAGKVDDARALLQ
 RCGAIAEQTPILLFLLRNSRKQGKASTVKSLELPELNEKEEAYNSLMKSYVSEKD
 VTSAKALYEHLTAKNTKLDDLFLKRYASLLKYAGEPVPFIEPPESFEFYAQQRLKRE
 NSSTRTRPLEQKLISEEDLAANDILDYKDDDDKV

Purity > 80% as determined by SDS-PAGE and Coomassie blue staining

Stability Stable for 3 months from receipt of products under proper storage and handling conditions.

Storage Store at -80 centigrade. Avoid repeated freeze-thaw cycles.

Concentration 50 µg/mL as determined by BCA

Storage Buffer 100 mM glycine, 25 mM Tris-HCl, pH 7.3.

 Tel: 1-631-559-9269 1-516-512-3133

 Email: info@creative-biomart.com  Fax: 1-631-938-8127

 45-1 Ramsey Road, Shirley, NY 11967, USA

GENE INFORMATION

Gene Name LRPPRC leucine-rich pentatricopeptide repeat containing [Homo sapiens (human)]

Official Symbol LRPPRC

Synonyms LRPPRC; leucine-rich pentatricopeptide repeat containing; Leigh syndrome, French Canadian type (cytochrome oxidase deficiency), LSFC; leucine-rich PPR motif-containing protein, mitochondrial; GP130; LRP130; LRP 130; 130 kDa leucine-rich protein; leucine-rich PPR-motif containing; mitochondrial leucine-rich PPR motif-containing protein; LSFC; CLONE-23970;

Gene ID 10128

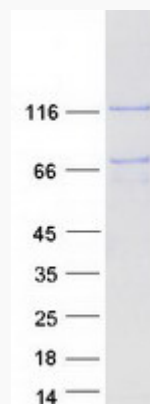
mRNA Refseq NM_133259

Protein Refseq NP_573566

MIM 607544

UniProt ID P42704

SDS-PAGE



 Tel: 1-631-559-9269 1-516-512-3133

 Email: info@creative-biomart.com  Fax: 1-631-938-8127

 45-1 Ramsey Road, Shirley, NY 11967, USA