

## Recombinant Human LRRC14 Protein, GST-tagged

Cat. No. LRRC14-4685H Lot. No. (See product label)

### SPECIFICATION

<b>Product Overview</b>	Human LRRC14 full-length ORF ( NP_055480.1, 1 a.a. - 493 a.a.) recombinant protein with GST-tag at N-terminal.
<b>Species</b>	Human
<b>Source</b>	Wheat Germ
<b>Description</b>	This gene encodes a leucine-rich repeat-containing protein. Alternate splicing results in multiple transcript variants. [provided by RefSeq, Dec 2012]
<b>Molecular Mass</b>	80.9 kDa
<b>AA Sequence</b>	MHTLVFLSTRQVLQCQPAACQALPLLPRELFPLLFKVAFMDKKTVVLRELVHTWPFPLLSFQQLLQECAHCSRALLQERPSTESMQAVILGLTARLHTSEPGASTQPLCRKHALRVLDMTGLLDDGVEQDPGTMSMWDCTAAVARTCIAQQQGGAAEPGPAPIPVEVRVDLRVNRASYAFLREALRSSVGSPLRLCCRDRAEDLPMRNTVALLQLLDAGCLRRVDLRFNNLGLRGLSVIIPHVARFQHLASRLHYVHGDSRQPSVDGEDNFRYFLAQMGRFTCLRELSMGSSLLSGRLDQLLSTLQSPLESLELAFCALLPEDLRFLARSPHAAHLK KLDLSGNDLSGSQ LAPFQGLLQASAATLLHLELTECQLADTQLLATLPILTQCASLRYLGLYGNPLSMAGLKELLRDSVAQAELRTVVHPFPVDCYEGLPWPPPASV LLEASINE EK FARVEAELHQLLLASGRAHVLWTTDIYGR LAADYFSL
<b>Applications</b>	Enzyme-linked Immunoabsorbent Assay Western Blot (Recombinant protein) Antibody Production

Tel: 1-631-559-9269 1-516-512-3133

Email: [info@creative-biomart.com](mailto:info@creative-biomart.com) Fax: 1-631-938-8127

45-1 Ramsey Road, Shirley, NY 11967, USA

**Protein Array**

<b>Notes</b>	Best use within three months from the date of receipt of this protein.
<b>Storage</b>	Store at -80 centigrade. Aliquot to avoid repeated freezing and thawing.
<b>Storage Buffer</b>	50 mM Tris-HCl, 10 mM reduced Glutathione, pH=8.0 in the elution buffer.

**GENE INFORMATION**

<b>Gene Name</b>	LRRC14 leucine rich repeat containing 14 [ Homo sapiens ]
<b>Official Symbol</b>	LRRC14
<b>Synonyms</b>	LRRC14; leucine rich repeat containing 14; leucine-rich repeat-containing protein 14; KIAA0014; LRRC14A;
<b>Gene ID</b>	9684
<b>mRNA Refseq</b>	NM_014665
<b>Protein Refseq</b>	NP_055480
<b>UniProt ID</b>	Q15048

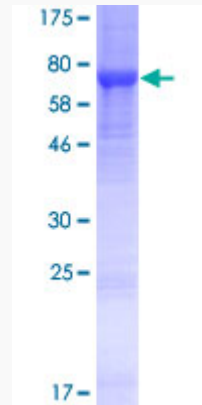
 Tel: 1-631-559-9269 1-516-512-3133

 Email: [info@creative-biomart.com](mailto:info@creative-biomart.com)  Fax: 1-631-938-8127

 45-1 Ramsey Road, Shirley, NY 11967, USA



**Quality Control  
Testing**



12.5% SDS-PAGE Stained with Coomassie Blue

Tel: 1-631-559-9269 1-516-512-3133

Email: [info@creative-biomart.com](mailto:info@creative-biomart.com) Fax: 1-631-938-8127

45-1 Ramsey Road, Shirley, NY 11967, USA