

Recombinant Human LRRC15 protein, His-Avi-tagged

Cat. No. LRRC15-066H Lot. No. (See product label)

SPECIFICATION

Product Overview	Recombinant Human LRRC15 Protein is expressed from Expi293 with a His and Avi Tag at the C-terminal. It contains Tyr22-Gly538.
Species	Human
Source	HEK293
ProteinLength	Tyr22-Gly538
Description	The chimeric protein binds in vitro and in vivo to a specific element upstream of LRRC15, leading to dramatic transcriptional activation. LRRC15 encodes a leucine-rich transmembrane protein, present at the leading edge of migrating cells, the expression of which in normal tissues is restricted to the invasive cytotrophoblast layer of the placenta; small interfering (siRNA)-mediated suppression of LRRC15 expression in breast cancer cells leads to abrogation of invasiveness in vitro.
Form	Supplied as 0.22um filtered solution in PBS (pH 7.4).
Molecular Mass	The protein has a predicted MW of 60.7 kDa. Due to glycosylation, the protein migrates to 70-80 KDa based on Bis-Tris PAGE result.
Endotoxin	Less than 1 EU per ug by the LAL method.
Purity	> 95% as determined by Bis-Tris PAGE; > 95% as determined by HPLC

 Tel: 1-631-559-9269 1-516-512-3133

 Email: info@creative-biomart.com  Fax: 1-631-938-8127

 45-1 Ramsey Road, Shirley, NY 11967, USA

Storage

The product should be stored at -70°C. Please do not repeated freeze-thaw cycles.

GENE INFORMATION**Gene Name**

LRRC15

Official Symbol

LRRC15

Synonyms

LIB, LRRC15

Gene ID

131578

mRNA Refseq

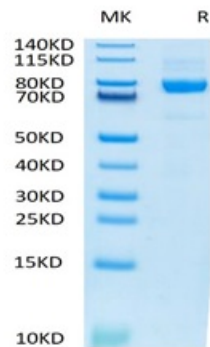
NM_001135057.3

Protein Refseq

NP_001128529.2

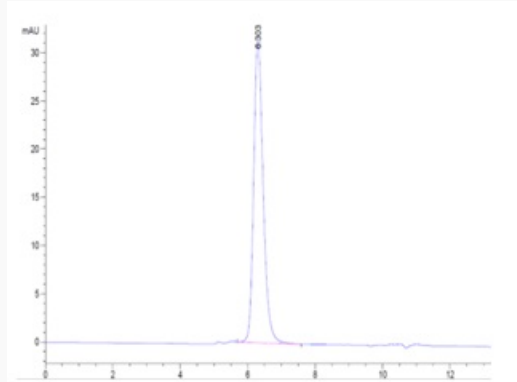
UniProt ID

Q8TF66

**Tris-Bis PAGE of
LRRC15-066H** Tel: 1-631-559-9269 1-516-512-3133 Email: info@creative-biomart.com  Fax: 1-631-938-8127 45-1 Ramsey Road, Shirley, NY 11967, USA



**SEC-HPLC of
LRRC15-066H**



☎ Tel: 1-631-559-9269 1-516-512-3133

☎ Email: info@creative-biomart.com ☎ Fax: 1-631-938-8127

☎ 45-1 Ramsey Road, Shirley, NY 11967, USA