

Recombinant Human LRRC15 protein, His-Avi-tagged, Biotinylated

Cat. No. LRRC15-4633H **Lot. No.** (See product label)

SPECIFICATION

Product Overview	Biotinylated Recombinant Human LRRC15 protein(Q8TF66-1)(Tyr22-Gly538), fused with C-terminal His and Avi tag, was expressed in CHO.
Species	Human
Source	CHO
ProteinLength	Tyr22-Gly538
Tag	C-His-Avi
Conjugation/Label	Biotin
Form	Supplied as 0.22µm filtered solution in PBS (pH 7.4).
Bio-activity	Immobilized Anti-LRRC15 Antibody, hFc Tag at 5µg/ml (100µl/well) on the plate. Dose response curve for Biotinylated Human LRRC15, His Tag with the EC50 of 35.6ng/ml determined by ELISA.
Molecular Mass	The protein has a predicted MW of 60.7 kDa. Due to glycosylation, the protein migrates to 70-80 kDa based on Tris-Bis PAGE result.
Endotoxin	Less than 1EU per µg by the LAL method.

 Tel: 1-631-559-9269 1-516-512-3133

 Email: info@creative-biomart.com  Fax: 1-631-938-8127

 45-1 Ramsey Road, Shirley, NY 11967, USA

Purity	> 95% as determined by Tris-Bis PAGE; > 95% as determined by HPLC
Storage	Valid for 12 months from date of receipt when stored at -80°C; Recommend to aliquot the protein into smaller quantities for optimal storage. Please do not repeated freeze-thaw cycles.
Reconstitution	It is recommended that sterile water be added to the vial to prepare a stock solution of 0.2 ug/ul. Centrifuge the vial at 4°C before opening to recover the entire contents.
Conjugation	Biotin

GENE INFORMATION

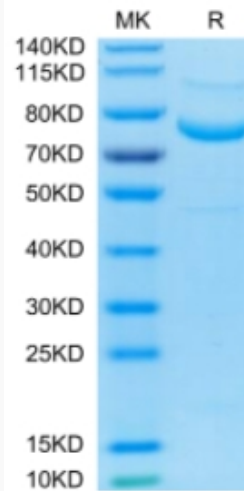
Gene Name	LRRC15 leucine rich repeat containing 15 [Homo sapiens]
Official Symbol	LRRC15
Synonyms	LRRC15; leucine rich repeat containing 15; leucine-rich repeat-containing protein 15; LIB; hLib; leucine-rich repeat protein induced by beta amyloid; leucine-rich repeat protein induced by beta-amyloid homolog;
Gene ID	131578
mRNA Refseq	NM_001135057
Protein Refseq	NP_001128529
UniProt ID	Q8TF66

 Tel: 1-631-559-9269 1-516-512-3133

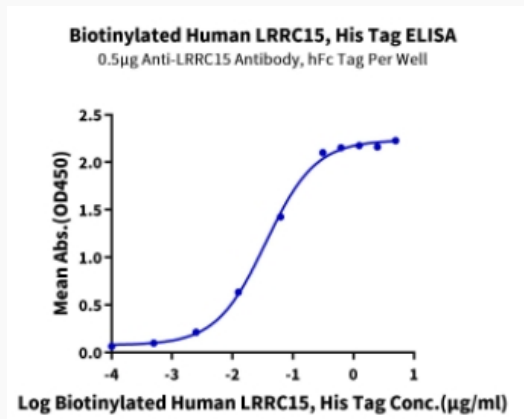
 Email: info@creative-biomart.com  Fax: 1-631-938-8127

 45-1 Ramsey Road, Shirley, NY 11967, USA

Tris-Bis PAGE



ELISA Data



 Tel: 1-631-559-9269 1-516-512-3133

 Email: info@creative-biomart.com  Fax: 1-631-938-8127

 45-1 Ramsey Road, Shirley, NY 11967, USA