

Active Recombinant Cynomolgus LRRC15 protein, His-tagged

Cat. No. LRRC15-485C Lot. No. (See product label)

SPECIFICATION

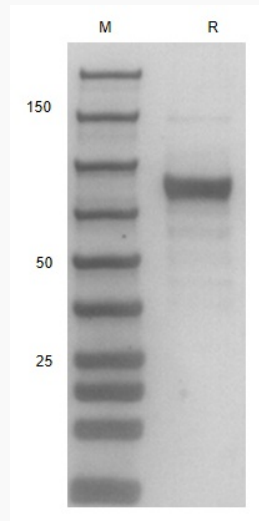
Product Overview	Recombinant Cynomolgus LRRC15 protein(F7FSB9)(Met1-Gly538), fused with His tag, was expressed in HEK293.
Species	Cynomolgus
Source	HEK293
ProteinLength	Met1-Gly538
Form	Lyophilized from 0.22 µm filtered solution in PBS, pH7.4.
Bio-activity	When Recombinant Cynomolgus LRRC15 /His Protein is immobilized at 2g/mL (100 µ/well), the concentration of Recombinant Anti-Human LRRC15 antibody that produces 50% of the optimal binding response is approximately 30 ng/ml.
Molecular Mass	The protein has a calculated MW of 60kDa. The reducing (R) heterodimer protein migrates as 70-100 kDa due to glycosylation
Endotoxin	<1EU/mg
Purity	SDS-PAGE>90%
Storage	Store at -20°C.
Reconstitution	sterile H ₂ O

 Tel: 1-631-559-9269 1-516-512-3133

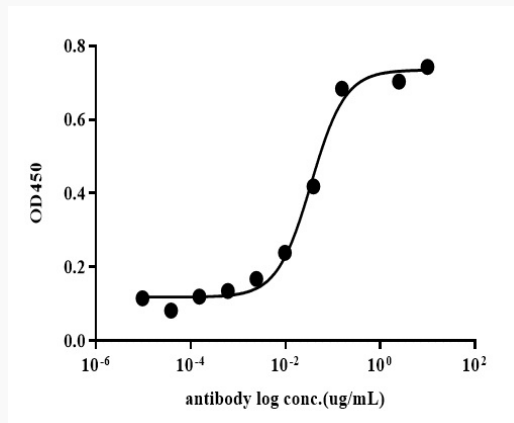
 Email: info@creative-biomart.com  Fax: 1-631-938-8127

 45-1 Ramsey Road, Shirley, NY 11967, USA

SDS-PAGE



ELISA



 Tel: 1-631-559-9269 1-516-512-3133

 Email: info@creative-biomart.com  Fax: 1-631-938-8127

 45-1 Ramsey Road, Shirley, NY 11967, USA