

Recombinant Human LRRC15 protein, His-Avi-tagged

Cat. No. LRRC15-5433H Lot. No. (See product label)

SPECIFICATION

Product Overview	Recombinant Human LRRC15 protein(Q8TF66-1)(Tyr22-Gly538), fused with C-terminal His and Avi tag, was expressed in CHO.
Species	Human
Source	CHO
ProteinLength	Tyr22-Gly538
Tag	C-His-Avi
Form	Supplied as 0.22µm filtered solution in 20mM Tris, 120mM NaCl (pH 7.5).
Bio-activity	Immobilized Anti-LRRC15 Antibody, hFc Tag at 1ug/ml (100ul/well) on the plate. Dose response curve for Human LRRC15, His Tag with the EC50 of 16.7ng/ml determined by ELISA.
Molecular Mass	The protein has a predicted MW of 60.7 kDa. Due to glycosylation, the protein migrates to 70-80 kDa based on Tris-Bis PAGE result.
Endotoxin	Less than 1EU per µg by the LAL method.
Purity	> 95% as determined by Tris-Bis PAGE;> 95% as determined by HPLC
Storage	Valid for 12 months from date of receipt when stored at -80°C.; Recommend to

 Tel: 1-631-559-9269 1-516-512-3133

 Email: info@creative-biomart.com  Fax: 1-631-938-8127

 45-1 Ramsey Road, Shirley, NY 11967, USA

aliquot the protein into smaller quantities for optimal storage. Please do not repeated freeze-thaw cycles.

Reconstitution**GENE INFORMATION**

Gene Name [LRRC15 leucine rich repeat containing 15 \[Homo sapiens \]](#)

Official Symbol [LRRC15](#)

Synonyms LRRC15; leucine rich repeat containing 15; leucine-rich repeat-containing protein 15; LIB; hLib; leucine-rich repeat protein induced by beta amyloid; leucine-rich repeat protein induced by beta-amyloid homolog;

Gene ID [131578](#)

mRNA Refseq [NM_001135057](#)

Protein Refseq [NP_001128529](#)

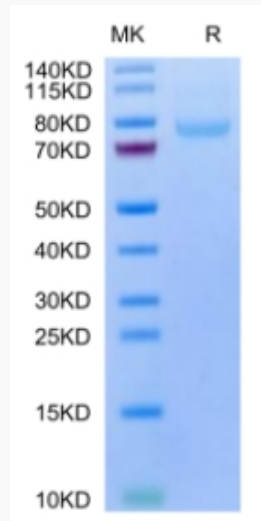
UniProt ID [Q8TF66](#)

 Tel: 1-631-559-9269 1-516-512-3133

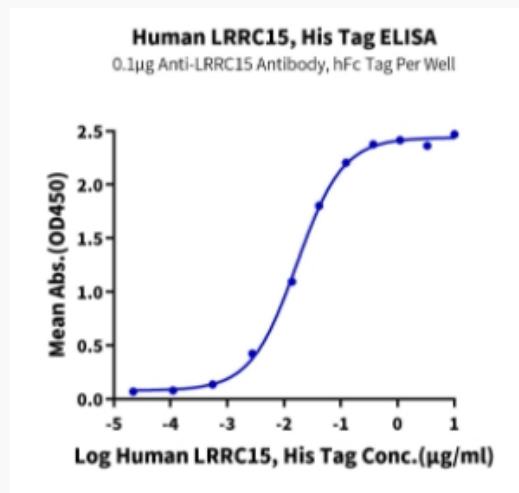
 Email: info@creative-biomart.com  Fax: 1-631-938-8127

 45-1 Ramsey Road, Shirley, NY 11967, USA

Tris-Bis PAGE



ELISA Data



 Tel: 1-631-559-9269 1-516-512-3133

 Email: info@creative-biomart.com  Fax: 1-631-938-8127

 45-1 Ramsey Road, Shirley, NY 11967, USA