

Recombinant Mouse LRRC15 protein, His-tagged

Cat. No. LRRC15-9249M **Lot. No.** (See product label)

SPECIFICATION

Product Overview	Recombinant Mouse LRRC15 protein(Q80X72-1)(Tyr 22 - Gly 536), fused to C-terminal His tag, was expressed in HEK293.
Species	Mouse
Source	HEK293
ProteinLength	Tyr 22 - Gly 536
Form	Lyophilized from 0.22 µm filtered solution in PBS, pH7.4. Normally trehalose is added as protectant before lyophilization.
Molecular Mass	The protein has a calculated MW of 59.5 kDa. The protein migrates as 65-90 kDa under reducing (R) condition (SDS-PAGE) due to glycosylation.
Endotoxin	Less than 1.0 EU per µg by the LAL method.
Purity	>95% as determined by SDS-PAGE. >90% as determined by SEC-MALS.
Storage	For long term storage, the product should be stored at lyophilized state at -20°C or lower. Please avoid repeated freeze-thaw cycles. This product is stable after storage at: -20°C to -70°C for 12 months in lyophilized state;

 Tel: 1-631-559-9269 1-516-512-3133

 Email: info@creative-biomart.com  Fax: 1-631-938-8127

 45-1 Ramsey Road, Shirley, NY 11967, USA

-70°C for 3 months under sterile conditions after reconstitution.

Reconstitution

It is recommended that sterile water be added to the vial to prepare a stock solution of 0.2 ug/ul. Centrifuge the vial at 4°C before opening to recover the entire contents.

GENE INFORMATION**Gene Name**

Lrrc15 leucine rich repeat containing 15 [*Mus musculus*]

Official Symbol

LRRC15

Synonyms

LRRC15; leucine rich repeat containing 15; leucine-rich repeat-containing protein 15; LIB; 5430427N11Rik;

Gene ID

74488

mRNA Refseq

NM_028973

Protein Refseq

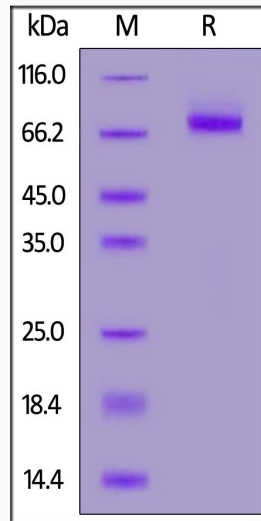
NP_083249

 Tel: 1-631-559-9269 1-516-512-3133

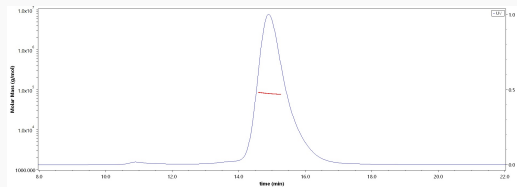
 Email: info@creative-biomart.com  Fax: 1-631-938-8127

 45-1 Ramsey Road, Shirley, NY 11967, USA

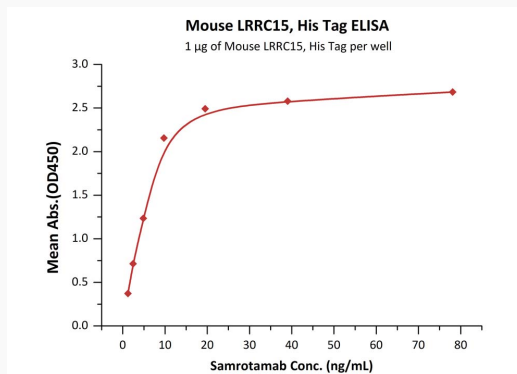
SDS-PAGE



SEC-MALS



Bioactivity-ELISA



Immobilized Mouse LRRC15, His Tag at 10 µg/mL (100 µL/well) can bind Samrotamab with a linear range of 1-10 ng/mL.

Tel: 1-631-559-9269 1-516-512-3133

Email: info@creative-biomart.com Fax: 1-631-938-8127

45-1 Ramsey Road, Shirley, NY 11967, USA