

# Recombinant Human LRRC2 Protein, Myc/DDK-tagged, C13 and N15-labeled

Cat. No. LRRC2-2689H Lot. No. (See product label)

## SPECIFICATION

<b>Product Overview</b>	LRRC2 MS Standard C13 and N15-labeled recombinant protein (NP_078788) with a C-terminal MYC/DDK tag, was expressed in HEK293 cells.
<b>Species</b>	Human
<b>Source</b>	HEK293
<b>Description</b>	This gene encodes a member of the leucine-rich repeat-containing family of proteins, which function in diverse biological pathways. This family member may possibly be a nuclear protein. Similarity to the RAS suppressor protein, as well as expression down-regulation observed in tumor cells, suggests that it may function as a tumor suppressor. The gene is located in the chromosome 3 common eliminated region 1 (C3CER1), a 1.4 Mb region that is commonly deleted in diverse tumors. A related pseudogene has been identified on chromosome 2.
<b>Molecular Mass</b>	42.8 kDa
<b>AA Sequence</b>	MGHKVVVFDISVIRALWETRVKHKHAWQKKEVERLEKSALEKIKEEWNFVAECRRK GIPQAVYCKNGFIDTSVRLLDKIERNTLTRQSSLPKDRGKRSSAFVFELSGEHWTEL PDSLKEQTHLREWYISNTLIQIPTYIQLFQAMRILDLPKNQISHLPAEIGCLKNLKELNV GFNYLKSIPPELGDCENLERLDCSGNLELMELPFELSNLKQVTFVDISANKFSSVPIC VLRMSNLQWLDISSNNLTDLPQDIDRLEELQSFLLYKNKLTYPYSMLNLKLTLLVV SGDHLVELPTALCDSSTPLKFVSLMDNPIDNAQCEDGNEIMESERDRQHFDKEVMK

 Tel: 1-631-559-9269 1-516-512-3133

 Email: [info@creative-biomart.com](mailto:info@creative-biomart.com)  Fax: 1-631-938-8127

 45-1 Ramsey Road, Shirley, NY 11967, USA

AYIEDLKERESVPSYTTKVSFSLQLTRTRPLEQKLISEEDLAANDILDYKDDDDKV

**Purity** > 80% as determined by SDS-PAGE and Coomassie blue staining

**Stability** Stable for 3 months from receipt of products under proper storage and handling conditions.

**Storage** Store at -80 centigrade. Avoid repeated freeze-thaw cycles.

**Concentration** 50 µg/mL as determined by BCA

**Storage Buffer** 100 mM glycine, 25 mM Tris-HCl, pH 7.3.

## GENE INFORMATION

**Gene Name** [LRRC2 leucine rich repeat containing 2 \[ Homo sapiens \(human\) \]](#)

**Official Symbol** [LRRC2](#)

**Synonyms** LRRC2; leucine rich repeat containing 2; leucine-rich repeat-containing protein 2;

**Gene ID** [79442](#)

**mRNA Refseq** [NM\\_024512](#)

**Protein Refseq** [NP\\_078788](#)

**MIM** [607180](#)

**UniProt ID** [Q9BYS8](#)

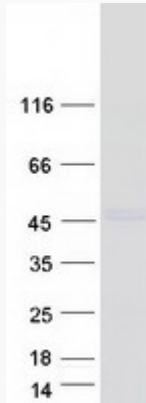
 Tel: 1-631-559-9269 1-516-512-3133

 Email: [info@creative-biomart.com](mailto:info@creative-biomart.com)  Fax: 1-631-938-8127

 45-1 Ramsey Road, Shirley, NY 11967, USA



SDS-PAGE



Tel: 1-631-559-9269 1-516-512-3133

Email: [info@creative-biomart.com](mailto:info@creative-biomart.com) Fax: 1-631-938-8127

45-1 Ramsey Road, Shirley, NY 11967, USA