

Recombinant Human LRRC2 Protein, GST-tagged

Cat. No. LRRC2-4680H Lot. No. (See product label)

SPECIFICATION

Product Overview Human LRRC2 full-length ORF (NP_079026.2, 1 a.a. - 371 a.a.) recombinant protein with GST-tag at N-terminal.

Species Human

Source Wheat Germ

Description This gene encodes a member of the leucine-rich repeat-containing family of proteins, which function in diverse biological pathways. This family member may possibly be a nuclear protein. Similarity to the RAS suppressor protein, as well as expression down-regulation observed in tumor cells, suggests that it may function as a tumor suppressor. The gene is located in the chromosome 3 common eliminated region 1 (C3CER1), a 1.4 Mb region that is commonly deleted in diverse tumors. A related pseudogene has been identified on chromosome 2. [provided by RefSeq, Sep 2011]

Molecular Mass 69.3 kDa

AA Sequence

```
MGHKVVVFDISVIRALWETRVKKHKAWQKKEVERLEKSALEKIKEEWNFVAECRRK
GIPQAVYCKNGFIDTSVRLLDKIERNTLTRQSSLPKDRGKRSSAFVFELSGEHWTEL
PDSLKEQTHLREWYISNTLIQIPTYIQLFQAMRILDLPKNQISHLPAEIGCLKNLKELNV
GFNYLKSIPPELGDCENLERLDCSGNLELMELPFELSNLKQVTFVDISANKFSSVPIC
VLRMSNLQWLDISSNLTDLQPQDIDRLEELQSFLLYKNKLTYPYSMLNLKLLTLLVV
SGDHLVELPTALCDSSTPLKFVSLMDNPIDNAQCEDGNEIMESERDRQHFDKEVMK
AYIEDLKERESVPSYTTKVSFSLQL
```

 Tel: 1-631-559-9269 1-516-512-3133

 Email: info@creative-biomart.com  Fax: 1-631-938-8127

 45-1 Ramsey Road, Shirley, NY 11967, USA

Applications	Enzyme-linked Immunoabsorbent Assay Western Blot (Recombinant protein) Antibody Production Protein Array
Notes	Best use within three months from the date of receipt of this protein.
Storage	Store at -80 centigrade. Aliquot to avoid repeated freezing and thawing.
Storage Buffer	50 mM Tris-HCl, 10 mM reduced Glutathione, pH=8.0 in the elution buffer.

GENE INFORMATION

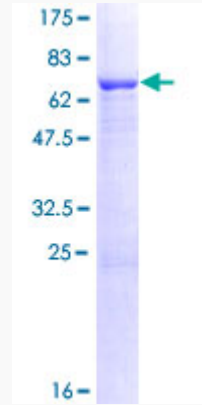
Gene Name	LRRC2 leucine rich repeat containing 2 [Homo sapiens]
Official Symbol	LRRC2
Synonyms	LRRC2; leucine rich repeat containing 2; leucine-rich repeat-containing protein 2;
Gene ID	79442
mRNA Refseq	NM_024512
Protein Refseq	NP_078788
MIM	607180
UniProt ID	Q9BYS8

 Tel: 1-631-559-9269 1-516-512-3133

 Email: info@creative-biomart.com  Fax: 1-631-938-8127

 45-1 Ramsey Road, Shirley, NY 11967, USA

**Quality Control
Testing**



12.5% SDS-PAGE Stained with Coomassie Blue

 Tel: 1-631-559-9269 1-516-512-3133

 Email: info@creative-biomart.com  Fax: 1-631-938-8127

 45-1 Ramsey Road, Shirley, NY 11967, USA