

Recombinant Human LRRC3B Protein (Cys34-Tyr204), C-His tagged

Cat. No. LRRC3B-3995H Lot. No. (See product label)

SPECIFICATION

Product Overview	Recombinant human LRRC3B (Cys34-Tyr204) fused with the C-terminal His tag was expressed in Mammalian cells.
Species	Human
Source	Mammalian Cells
ProteinLength	Cys34-Tyr204
Form	Lyophilized powder/frozen liquid
Molecular Mass	18.81 kDa
Endotoxin	< 1.0 EU/μg of the protein as determined by the LAL method.
Purity	>90% as determined by SDS-PAGE.
Notes	For research use only.
Storage	Use a manual defrost freezer and avoid repeated freeze thaw cycles. Store at 2 to 8 centigrade for one week. Store at -20 to -80 centigrade for twelve months from the date of receipt.
Storage Buffer	Supplied as solution form in PBS or lyophilized from PBS.

 Tel: 1-631-559-9269 1-516-512-3133

 Email: info@creative-biomart.com  Fax: 1-631-938-8127

 45-1 Ramsey Road, Shirley, NY 11967, USA

Reconstitution Reconstitute in sterile water for a stock solution.

Shipping They are shipped out with dry ice/blue ice unless customers require otherwise.

GENE INFORMATION

Gene Name [LRRC3B leucine rich repeat containing 3B \[Homo sapiens \(human\) \]](#)

Official Symbol [LRRC3B](#)

Synonyms LRP15; LRRC3B; leucine rich repeat containing 3B

Gene ID [116135](#)

mRNA Refseq [NM_052953](#)

Protein Refseq [NP_443185](#)

MIM [618996](#)

UniProt ID [Q96PB8](#)

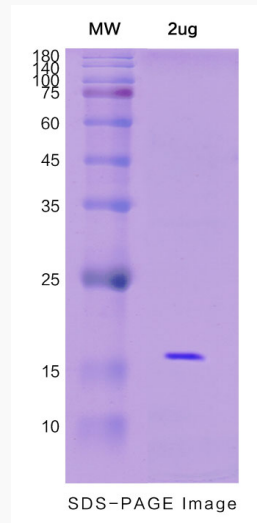
 Tel: 1-631-559-9269 1-516-512-3133

 Email: info@creative-biomart.com  Fax: 1-631-938-8127

 45-1 Ramsey Road, Shirley, NY 11967, USA



SDS-PAGE



Tel: 1-631-559-9269 1-516-512-3133

Email: info@creative-biomart.com Fax: 1-631-938-8127

45-1 Ramsey Road, Shirley, NY 11967, USA