

Recombinant Human LRRC3B Protein, Myc/DDK-tagged, C13 and N15-labeled

Cat. No. LRRC3B-4303H **Lot. No.** (See product label)

SPECIFICATION

Product Overview	LRRC3B MS Standard C13 and N15-labeled recombinant protein (NP_443185) with a C-terminal MYC/DDK tag, was expressed in HEK293 cells.
Species	Human
Source	HEK293
Description	The protein encoded by this gene is a tumor suppressor, with lowered expression levels found in gastric, renal, colorectal, lung, and breast cancer tissues. The promoter of this gene is frequently hypermethylated in these cancer tissues, although the hypermethylation does not appear to be the cause of the reduced expression of this gene. Several transcript variants encoding the same protein have been found for this gene.
Molecular Mass	29.3 kDa
AA Sequence	MNLVDLWLTRSLSMCLLLQSFVLMILCFHSASMCPKGCLCSSSGGLNVTCSNANLK EIPRDLPPETVLLYLDSNQITSIPNEIFKDLHQLRVLNLSKNGIEFIDEHAFKGV AETLQ TLDLSDNRIQSVHKNAFNLLKARARIANNPWHCDCTLQQVLRSMASNHETAHNVIC KTSVLDEHAGRPFLNAANDADLCNLPKKTDDYAMLVTMFGWFTMVISYVVYYVRQN QEDARRHLEYLKSLPSRQKKADEPDDISTVVTRTRPLEQKLISEEDLAANDILDYKDD DDKV
Purity	> 80% as determined by SDS-PAGE and Coomassie blue staining

 Tel: 1-631-559-9269 1-516-512-3133

 Email: info@creative-biomart.com  Fax: 1-631-938-8127

 45-1 Ramsey Road, Shirley, NY 11967, USA

Stability	Stable for 3 months from receipt of products under proper storage and handling conditions.
Storage	Store at -80 centigrade. Avoid repeated freeze-thaw cycles.
Concentration	50 µg/mL as determined by BCA
Storage Buffer	100 mM glycine, 25 mM Tris-HCl, pH 7.3.

GENE INFORMATION

Gene Name	LRRC3B leucine rich repeat containing 3B [Homo sapiens (human)]
Official Symbol	LRRC3B
Synonyms	LRRC3B; leucine rich repeat containing 3B; LRP15; leucine-rich repeat-containing protein 3B; leucine-rich repeat protein 15; leucine-rich repeat protein LRP15
Gene ID	116135
mRNA Refseq	NM_052953
Protein Refseq	NP_443185
MIM	618996
UniProt ID	Q96PB8

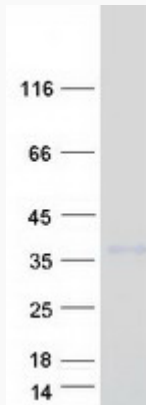
 Tel: 1-631-559-9269 1-516-512-3133

 Email: info@creative-biomart.com  Fax: 1-631-938-8127

 45-1 Ramsey Road, Shirley, NY 11967, USA



SDS-PAGE



Tel: 1-631-559-9269 1-516-512-3133

Email: info@creative-biomart.com Fax: 1-631-938-8127

45-1 Ramsey Road, Shirley, NY 11967, USA