

Recombinant Human LRRC3B Protein, GST-tagged

Cat. No. LRRC3B-4668H **Lot. No.** (See product label)

SPECIFICATION

Product Overview	Human LRRC3B full-length ORF (NP_443185.1, 1 a.a. - 259 a.a.) recombinant protein with GST-tag at N-terminal.
Species	Human
Source	Wheat Germ
Description	The protein encoded by this gene is a tumor suppressor, with lowered expression levels found in gastric, renal, colorectal, lung, and breast cancer tissues. The promoter of this gene is frequently hypermethylated in these cancer tissues, although the hypermethylation does not appear to be the cause of the reduced expression of this gene. Several transcript variants encoding the same protein have been found for this gene. [provided by RefSeq, Dec 2015]
Molecular Mass	55.7 kDa
AA Sequence	MNLVDLWLTRSLSMCLLLQSFVLMILCFHSASMCPKGCLCSSSGGLNVTCSNANLK EIPRDLPPETVLLYLDSNQITSIPNEIFKDLHQLRVLNLSKNGIEFIDEHAFKGV AETLQ TLDLSDNRIQSVHKNFNNL KARARIANNPW HCDCTLQQVLRSMASNHETAHNVIC KTSVLDEHAGRPFLNAANDADLCNLPKKT TDYAMLVTMFGWFTMVISYVVYYVRQN QEDARRHLEYLKSLPSRQKKADEPDDISTVV
Applications	Enzyme-linked Immunoabsorbent Assay Western Blot (Recombinant protein) Antibody Production

 Tel: 1-631-559-9269 1-516-512-3133

 Email: info@creative-biomart.com  Fax: 1-631-938-8127

 45-1 Ramsey Road, Shirley, NY 11967, USA

Protein Array

Notes	Best use within three months from the date of receipt of this protein.
Storage	Store at -80 centigrade. Aliquot to avoid repeated freezing and thawing.
Storage Buffer	50 mM Tris-HCl, 10 mM reduced Glutathione, pH=8.0 in the elution buffer.

GENE INFORMATION

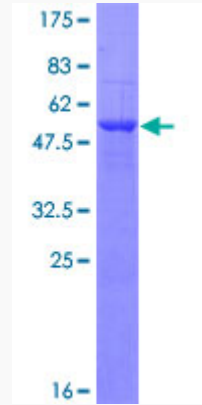
Gene Name	LRRC3B leucine rich repeat containing 3B [Homo sapiens]
Official Symbol	LRRC3B
Synonyms	LRP15; LRRC3B; leucine rich repeat containing 3B
Gene ID	116135
mRNA Refseq	NM_052953
Protein Refseq	NP_443185
UniProt ID	Q96PB8

 Tel: 1-631-559-9269 1-516-512-3133

 Email: info@creative-biomart.com  Fax: 1-631-938-8127

 45-1 Ramsey Road, Shirley, NY 11967, USA

**Quality Control
Testing**



12.5% SDS-PAGE Stained with Coomassie Blue

 Tel: 1-631-559-9269 1-516-512-3133

 Email: info@creative-biomart.com  Fax: 1-631-938-8127

 45-1 Ramsey Road, Shirley, NY 11967, USA