

Recombinant Human LRRC40 Protein (1-602 aa), His-tagged

Cat. No. LRRC40-1144H Lot. No. (See product label)

SPECIFICATION

Product Overview Recombinant Human LRRC40 Protein (1-602 aa) is produced by E. coli expression system. This protein is fused with a 6xHis tag at the N-terminal. Research Area: Cell Biology. Protein Description: Full Length.

Species Human

Source E.coli

ProteinLength 1-602 aa

Form Tris-based buffer, 50% glycerol

Molecular Mass 72.2 kDa

AA Sequence

```
MSRLKRIAGQDLRAGFKAGGRDCGTSVPQGLLKAARKSGQLNLSGRNLSEVPQCV
WRINVDIPEEANQNLSFGATERWWEQTDLTKLIISNNKLQSLTDDLRLLPALTVLDIH
DNQLTSLPSAIRELENLQKLNVSHNKILPEEITNLRNLKCLYLQHNELTCISEGFEQ
LSNLEDLDLSNNHLTTVPASFSSLSLVRLNLSSNELKSLPAEINRMKRLKHLDCNSN
LLETIPPELAGMESLELLYLRRNKLRFPEFPSCSLLKELHVGENQIEMLEAEHLKHLN
SILVLDLRDNKLKSPDEIILLRSLERLDLSNNDISSLPYSLGNLHLKFLALEGNPLRTIR
REIISKGTQEVLYKYLRSKIKDDGPSQSESATETAMTLPSESRVNIHAITLKILDYSDKQ
ATLIPDEVFDAVKSNIVTSINFSKNQLCEIPKRMVELKEMVSDVDLSFNKLSFISLELCV
LQKLTFDLRNNFLNSLPEEMESLVRLQTINLSFNRFKMLPEVLYRIFTLETILISNNQV
GSVDPQMKMMENLTLDLQNDLLQIPPELGNCVNLRTLLLDGNPFRVPRAAILMK
GTAAILEYLRDRIPT
```

 Tel: 1-631-559-9269 1-516-512-3133

 Email: info@creative-biomart.com  Fax: 1-631-938-8127

 45-1 Ramsey Road, Shirley, NY 11967, USA

Purity	> 90% as determined by SDS-PAGE.
Notes	Repeated freezing and thawing is not recommended. Store working aliquots at 4 centigrade for up to one week.
Storage	The shelf life is related to many factors, storage state, buffer ingredients, storage temperature and the stability of the protein itself. Generally, the shelf life of liquid form is 6 months at -20 centigrade/-80 centigrade. The shelf life of lyophilized form is 12 months at -20 centigrade/-80 centigrade.
Concentration	A hardcopy of COA with concentration instruction is sent along with the products.

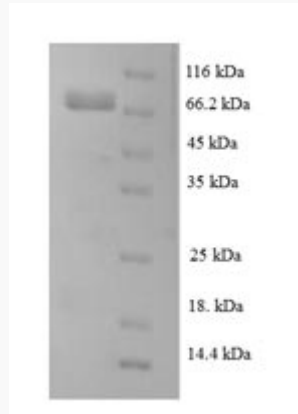
GENE INFORMATION

Gene Name	LRRC40 leucine rich repeat containing 40 [Homo sapiens]
Official Symbol	LRRC40
Synonyms	LRRC40; FLJ20331; dJ677H15.1;
Gene ID	55631
mRNA Refseq	NM_017768
Protein Refseq	NP_060238
UniProt ID	Q9H9A6

 Tel: 1-631-559-9269 1-516-512-3133

 Email: info@creative-biomart.com  Fax: 1-631-938-8127

 45-1 Ramsey Road, Shirley, NY 11967, USA



(Tris-Glycine gel) Discontinuous SDS-PAGE (reduced) with 5% enrichment gel and 15% separation gel.

Tel: 1-631-559-9269 1-516-512-3133

Email: info@creative-biomart.com Fax: 1-631-938-8127

45-1 Ramsey Road, Shirley, NY 11967, USA