

Recombinant Human LRRC40 Protein, Myc/DDK-tagged, C13 and N15-labeled

Cat. No. LRRC40-4472H **Lot. No.** (See product label)

SPECIFICATION

Product Overview

LRRC40 MS Standard C13 and N15-labeled recombinant protein (NP_060238) with a C-terminal MYC/DDK tag, was expressed in HEK293 cells.

Species

Human

Source

HEK293

Description

LRRC40 (Leucine Rich Repeat Containing 40) is a Protein Coding gene. An important paralog of this gene is SCRIB.

Molecular Mass

68.2 kDa

AA Sequence

```
MSRLKRIAGQDLRAGFKAGGRDCGTSVPQGLLKAARKSGQLNLSGRNLSEVPQC  
WRINVDIPEEANQNLSFGATERWWEQTDLTCLIISNNKLQSLTDDLRLLPALTVLDIH  
DNQLTSLPSAIRELENLQKLVSHNKLKILPEEITNLRNLKCLYLQHNELTCISEGFEQ  
LSNLEDLDLSNNHLTTVPASFSSLVRLNLSSNELKSLPAEINRMKRLKHLDCNSN  
LLETIPPELAGMESLELLYLRRNKLRLPEFPSCSLLKELHVGENQIEMLEAEHLKHLN  
SILVLDLRDNKLKSVPEIILLRSLERLDLSNNDISSLPYSLGNLHLKFLALEGNPLRTIR  
REIISKGTQEVLYKYLRSKIKDDGPSQSESATETAMTLPSESRVNIHAITLKILDYSDKQ  
ATLIPDEVFDAVKSNIVTSINFSKNQLCEIPKRMVELKEMVSDVDLSFNKLSFISLELCV  
LQKLTFDLRNNFLNSLPEEMESLVRLQTINLSFNRFKMLPEVLYRIFTLETILISNNQV  
GSVDPQKMKMMENLTTLDLQNNDLLQIPPELGNCVNLRTLLLDGNPFRVPRAILMK  
GTAAILEYLRDRIPTTRTRPLEQKLISEEDLAANDILDYKDDDDKV
```

 Tel: 1-631-559-9269 1-516-512-3133

 Email: info@creative-biomart.com  Fax: 1-631-938-8127

 45-1 Ramsey Road, Shirley, NY 11967, USA

Purity	> 80% as determined by SDS-PAGE and Coomassie blue staining
Stability	Stable for 3 months from receipt of products under proper storage and handling conditions.
Storage	Store at -80 centigrade. Avoid repeated freeze-thaw cycles.
Concentration	50 µg/mL as determined by BCA
Storage Buffer	100 mM glycine, 25 mM Tris-HCl, pH 7.3.

GENE INFORMATION

Gene Name	LRRC40 leucine rich repeat containing 40 [Homo sapiens (human)]
Official Symbol	LRRC40
Synonyms	LRRC40; leucine rich repeat containing 40; leucine-rich repeat-containing protein 40; FLJ20331; dJ677H15.1;
Gene ID	55631
mRNA Refseq	NM_017768
Protein Refseq	NP_060238
UniProt ID	Q9H9A6

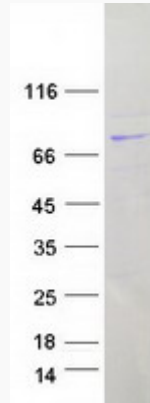
 Tel: 1-631-559-9269 1-516-512-3133

 Email: info@creative-biomart.com  Fax: 1-631-938-8127

 45-1 Ramsey Road, Shirley, NY 11967, USA



SDS-PAGE



Tel: 1-631-559-9269 1-516-512-3133

Email: info@creative-biomart.com Fax: 1-631-938-8127

45-1 Ramsey Road, Shirley, NY 11967, USA