

Recombinant Human LRRC40 Protein, GST-tagged

Cat. No. LRRC40-4667H Lot. No. (See product label)

SPECIFICATION

Product Overview	Human LRRC40 full-length ORF (NP_060238.3, 1 a.a. - 602 a.a.) recombinant protein with GST-tag at N-terminal.
Species	Human
Source	Wheat Germ
Description	LRRC40 (Leucine Rich Repeat Containing 40) is a Protein Coding gene. An important paralog of this gene is LRRD1.
Molecular Mass	94.6 kDa
AA Sequence	MSRLKRIAGQDLRAGFKAGGRDCGTSVPQGLLKAARKSGQLNLSGRNLSEVPQCV WRINVDIPEEANQNLSFGATERWWEQTDLTKLIISNNKLQSLTDDLRLLPALTVLDIH DNQLTSLPSAIRELENLQKLNVSHNKLKILPEEITNLRNLKCLYLQHNE LTCISEGFEQ LSNLEDLDLSNNHLTTVPASFSSLSLVRLNLSSNELKSLPAEINRMKRLKHLDCNSN LLETIPPELAGMESLELLYLRRNKLRLPEFPSCSLLKELHVGENQIEMLEAEHLKHLN SILVLDLRDNKLSVPDEIILLRSLERLDLSNNDISSLPYSLGNLHLKFLALEGNPLRTIR REIISKGTQEV LKYLRSKIKDDGPSQSESATETAMTLPSESRVNIHAIITLKILDYSDKQ ATLIPDEVF DAVKSNIVTSINF SKNQLCEIPKRMVELKEMVSDVDLSFNKLSFISLELCV LQKLTFDLRNNFLNSLPEEMESLVRLQTINLSFNRFKMLPEVLYRIFTLETILISNNQV GSVDPQKMKMMENLTTLDLQNDLLQIPPELGNCVNLRTLLLDGNPFRVPRAAILMK GTAAILEYLRDRIPT
Applications	Enzyme-linked Immunoabsorbent Assay

 Tel: 1-631-559-9269 1-516-512-3133

 Email: info@creative-biomart.com  Fax: 1-631-938-8127

 45-1 Ramsey Road, Shirley, NY 11967, USA

Western Blot (Recombinant protein)
 Antibody Production
 Protein Array

Notes	Best use within three months from the date of receipt of this protein.
Storage	Store at -80 centigrade. Aliquot to avoid repeated freezing and thawing.
Storage Buffer	50 mM Tris-HCl, 10 mM reduced Glutathione, pH=8.0 in the elution buffer.

GENE INFORMATION

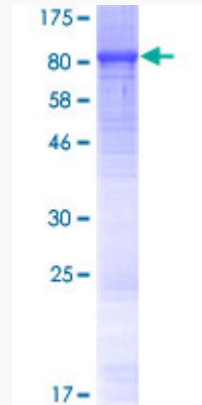
Gene Name	LRRC40 leucine rich repeat containing 40 [Homo sapiens]
Official Symbol	LRRC40
Synonyms	LRRC40; leucine rich repeat containing 40; leucine-rich repeat-containing protein 40; FLJ20331; dJ677H15.1;
Gene ID	55631
mRNA Refseq	NM_017768
Protein Refseq	NP_060238
UniProt ID	Q9H9A6

 Tel: 1-631-559-9269 1-516-512-3133

 Email: info@creative-biomart.com  Fax: 1-631-938-8127

 45-1 Ramsey Road, Shirley, NY 11967, USA

**Quality Control
Testing**



12.5% SDS-PAGE Stained with Coomassie Blue

 Tel: 1-631-559-9269 1-516-512-3133

 Email: info@creative-biomart.com  Fax: 1-631-938-8127

 45-1 Ramsey Road, Shirley, NY 11967, USA